

Product Name: PRKACA Rabbit Monoclonal Antibody
Catalog #: AMRe21423



Summary

Production Name	PRKACA Rabbit Monoclonal Antibody
Description	Rabbit Monoclonal Antibody
Host	Rabbit
Application	WB,IHC,IF,IP,ELISA
Reactivity	Human,Mouse,Rat

Performance

Conjugation	Unconjugated
Modification	Unmodified
Isotype	IgG,Kappa
Clonality	Monoclonal
Form	Liquid
Storage	Store at 4°C short term. Aliquot and store at -20°C long term. Avoid freeze/thaw cycles.
Buffer	PBS, 50% glycerol, 0.05% Proclin 300, 0.05%BSA
Purification	Protein A

Immunogen

Gene Name	PRKACA
Alternative Names	PRKACA;PKACA;cAMP-dependent protein kinase catalytic subunit alpha;PKA C-alpha
Gene ID	5566.0
SwissProt ID	P17612.

Application

Dilution Ratio	IHC 1:2000-1:10000;WB 1:1000-1:5000;IF 1:200-1:1000;ELISA 1:5000-1:20000;IP 1:50-1:200;
Molecular Weight	Calculated MW:40kD;Observed MW:40kD

Background

Cell localization:Cytoplasm, Membrane.This gene encodes one of the catalytic subunits of protein kinase A, which exists as

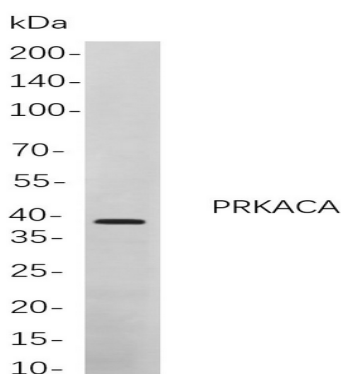
Product Name: PRKACA Rabbit Monoclonal Antibody
Catalog #: AMRe21423



a tetrameric holoenzyme with two regulatory subunits and two catalytic subunits, in its inactive form. cAMP causes the dissociation of the inactive holoenzyme into a dimer of regulatory subunits bound to four cAMP and two free monomeric catalytic subunits. Four different regulatory subunits and three catalytic subunits have been identified in humans. cAMP-dependent phosphorylation of proteins by protein kinase A is important to many cellular processes, including differentiation, proliferation, and apoptosis. Constitutive activation of this gene caused either by somatic mutations, or genomic duplications of regions that include this gene, have been associated with hyperplasias and adenomas of the adrenal cortex and are linked to corticotropin-independent Cushing's syndrome. Altern

Research Area

Image Data



Western blot analysis of lysates from HeLa

cells, using PRKACA Rabbit mAb. The HRP-conjugated Goat anti-Rabbit IgG antibody was used to detect the antibody.

Note

For research use only.