

Product Name: Integrin β 3 Rabbit Monoclonal Antibody
Catalog #: AMRe21364

Summary

Production Name	Integrin β 3 Rabbit Monoclonal Antibody
Description	Rabbit Monoclonal Antibody
Host	Rabbit
Application	WB,IHC,IF,IP,ELISA
Reactivity	Human,Mouse,Rat

Performance

Conjugation	Unconjugated
Modification	Unmodified
Isotype	IgG,Kappa
Clonality	Monoclonal
Form	Liquid
Storage	Store at 4°C short term. Aliquot and store at -20°C long term. Avoid freeze/thaw cycles.
Buffer	PBS, 50% glycerol, 0.05% Proclin 300, 0.05%BSA
Purification	Protein A

Immunogen

Gene Name	ITGB3 GP3A
Alternative Names	Integrin beta-3 (Platelet membrane glycoprotein IIIa) (GPIIIa) (CD antigen CD61)
Gene ID	3690.0
SwissProt ID	P05106.

Application

Dilution Ratio	IHC 1:1000-1:4000;WB 1:500-1:2000;IF 1:200-1:1000;ELISA 1:5000-1:20000;IP 1:50-1:200;
Molecular Weight	Calculated MW:87kD;Observed MW:100kD

Background

Cell localization:Membrane.integrin subunit beta 3(ITGB3) Homo sapiens The ITGB3 protein product is the integrin beta

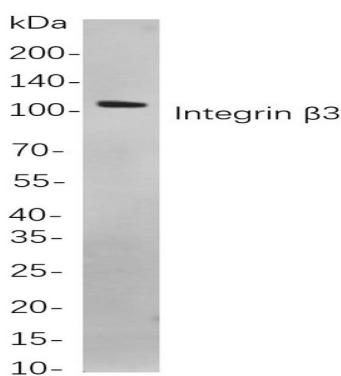
Product Name: Integrin β 3 Rabbit Monoclonal Antibody
Catalog #: AMRe21364



chain beta 3. Integrins are integral cell-surface proteins composed of an alpha chain and a beta chain. A given chain may combine with multiple partners resulting in different integrins. Integrin beta 3 is found along with the alpha IIb chain in platelets. Integrins are known to participate in cell adhesion as well as cell-surface mediated signalling. [provided by RefSeq, Jul 2008],

Research Area

Image Data



Western blot analysis of lysates from Mouse spleen

cells, using Integrin β 3 Rabbit mAb. The HRP-conjugated Goat anti-Rabbit IgG antibody was used to detect the antibody.

Note

For research use only.