

Product Name: PP2A α/β Rabbit Monoclonal Antibody
Catalog #: AMRe21363



Summary

Production Name	PP2A α/β Rabbit Monoclonal Antibody
Description	Rabbit Monoclonal Antibody
Host	Rabbit
Application	WB,IHC,IF,IP,ELISA
Reactivity	Human,Mouse,Rat

Performance

Conjugation	Unconjugated
Modification	Unmodified
Isotype	IgG,Kappa
Clonality	Monoclonal
Form	Liquid
Storage	Store at 4°C short term. Aliquot and store at -20°C long term. Avoid freeze/thaw cycles.
Buffer	PBS, 50% glycerol, 0.05% Proclin 300, 0.05%BSA
Purification	Protein A

Immunogen

Gene Name	PPP2CA PP2A A;PP2A alpha;PP2A B;PP2A beta;PP2A-alpha;PP2A-beta;PP2AA_HUMAN;PP2Aalpha;PP2AB_HUMAN;PP2Abeta;PP2Ac;PP2CA;PP2Calpha;P P2CB;PPP2CA;PPP2CB;Protein phosphatase 2 catalytic subunit alpha isoform;Protein phosphatase 2 catalytic subunit beta isoform;Protein phosphatase type 2A catalytic subunit;Replication protein C;RP C;RP-C;RPC;Serine/threonine protein phosphatase 2A catalytic subunit alpha isoform;Serine/threonine protein phosphatase 2A catalytic subunit beta isoform;Serine/threonine-protein phosphatase 2A catalytic subunit alpha isoform;
Alternative Names	
Gene ID	5515;5516
SwissProt ID	P67775;P62714.

Application

Product Name: PP2A α/β Rabbit Monoclonal Antibody
Catalog #: AMRe21363



Dilution Ratio

IHC 1:200-1:1000;WB 1:2000-1:10000;IF 1:200-1:1000;ELISA 1:5000-1:20000;IP 1:50-1:200;

Molecular Weight

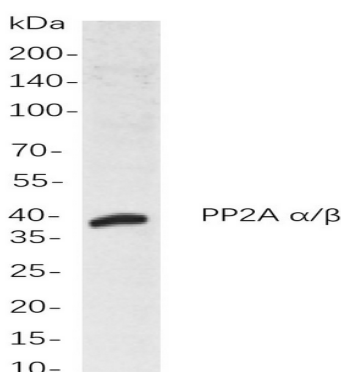
Calculated MW:36kD;Observed MW:36kD

Background

Cell localization:Cytoplasm.This gene encodes the phosphatase 2A catalytic subunit. Protein phosphatase 2A is one of the four major Ser/Thr phosphatases, and it is implicated in the negative control of cell growth and division. It consists of a common heteromeric core enzyme, which is composed of a catalytic subunit and a constant regulatory subunit, that associates with a variety of regulatory subunits. This gene encodes an alpha isoform of the catalytic subunit. [provided by RefSeq, Jul 2008],

Research Area

Image Data



Western blot analysis of lysates from HeLa

cells, using PP2A α/β Rabbit mAb. The HRP-conjugated Goat anti-Rabbit IgG antibody was used to detect the antibody.

Note

For research use only.