

Product Name: Ferritin Heavy Chain Rabbit Monoclonal Antibody
Catalog #: AMRe21358

Summary

Production Name	Ferritin Heavy Chain Rabbit Monoclonal Antibody
Description	Rabbit Monoclonal Antibody
Host	Rabbit
Application	WB,IHC,IF,IP,ELISA
Reactivity	Mouse,Rat

Performance

Conjugation	Unconjugated
Modification	Unmodified
Isotype	IgG,Kappa
Clonality	Monoclonal
Form	Liquid
Storage	Store at 4°C short term. Aliquot and store at -20°C long term. Avoid freeze/thaw cycles.
Buffer	PBS, 50% glycerol, 0.05% Proclin 300, 0.05%BSA
Purification	Protein A

Immunogen

Gene Name	FTH1
Alternative Names	FTH1;FTH;FTHL6;OK/SW-cl.84;PIG15;Ferritin heavy chain;Ferritin H subunit;Cell proliferation-inducing gene 15 protein
Gene ID	14319
SwissProt ID	P09528.

Application

Dilution Ratio	IHC 1:200-1:1000;WB 1:2000-1:10000;IF 1:200-1:1000;ELISA 1:5000-1:20000;IP 1:50-1:200;
Molecular Weight	Calculated MW:21kD;Observed MW:21kD

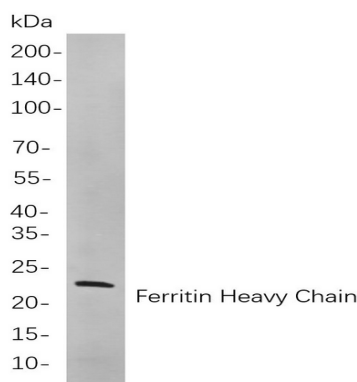
Product Name: Ferritin Heavy Chain Rabbit Monoclonal Antibody
Catalog #: AMRe21358

Background

Cell localization: Cytoplasm. This gene encodes the heavy subunit of ferritin, the major intracellular iron storage protein in prokaryotes and eukaryotes. It is composed of 24 subunits of the heavy and light ferritin chains. Variation in ferritin subunit composition may affect the rates of iron uptake and release in different tissues. A major function of ferritin is the storage of iron in a soluble and nontoxic state. Defects in ferritin proteins are associated with several neurodegenerative diseases. This gene has multiple pseudogenes. Several alternatively spliced transcript variants have been observed, but their biological validity has not been determined. [provided by RefSeq, Jul 2008],

Research Area

Image Data



Western blot analysis of lysates from Mouse liver

cells, using Ferritin Heavy Chain Rabbit mAb. The HRP-conjugated Goat anti-Rabbit IgG antibody was used to detect the antibody.

Note

For research use only.