

Product Name: Cdc2 Rabbit Monoclonal Antibody
Catalog #: AMRe21356



Summary

Production Name	Cdc2 Rabbit Monoclonal Antibody
Description	Rabbit Monoclonal Antibody
Host	Rabbit
Application	WB,IHC,IF,IP,ELISA
Reactivity	Human,Mouse

Performance

Conjugation	Unconjugated
Modification	Unmodified
Isotype	IgG,Kappa
Clonality	Monoclonal
Form	Liquid
Storage	Store at 4°C short term. Aliquot and store at -20°C long term. Avoid freeze/thaw cycles.
Buffer	PBS, 50% glycerol, 0.05% Proclin 300, 0.05%BSA
Purification	Protein A

Immunogen

Gene Name	CDK1
Alternative Names	CDK1;CDC2;CDC28A;CDKN1;P34CDC2;Cyclin-dependent kinase 1;CDK1;Cell division control protein 2 homolog;Cell division protein kinase 1;p34 protein kinase
Gene ID	983
SwissProt ID	P06493.

Application

Dilution Ratio	IHC 1:1000-1:4000;WB 1:2000-1:10000;IF 1:200-1:1000;ELISA 1:5000-1:20000;IP 1:50-1:200;
Molecular Weight	Calculated MW:34kD;Observed MW:34kD

Background

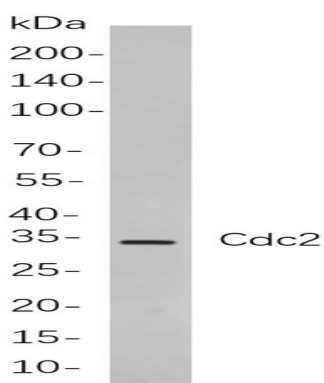
Product Name: Cdc2 Rabbit Monoclonal Antibody
Catalog #: AMRe21356



Cell localization: Cytoplasm, Nucleus. cyclin dependent kinase 1 (CDK1) Homo sapiens The protein encoded by this gene is a member of the Ser/Thr protein kinase family. This protein is a catalytic subunit of the highly conserved protein kinase complex known as M-phase promoting factor (MPF), which is essential for G1/S and G2/M phase transitions of eukaryotic cell cycle. Mitotic cyclins stably associate with this protein and function as regulatory subunits. The kinase activity of this protein is controlled by cyclin accumulation and destruction through the cell cycle. The phosphorylation and dephosphorylation of this protein also play important regulatory roles in cell cycle control. Alternatively spliced transcript variants encoding different isoforms have been found for this gene. [provided by RefSeq, Mar 2009],

Research Area

Image Data



Western blot analysis of lysates from K562

cells, using Cdc2 Rabbit mAb. The HRP-conjugated Goat anti-Rabbit IgG antibody was used to detect the antibody.

Note

For research use only.