

**Product Name: CREB-1 Rabbit Monoclonal Antibody**  
**Catalog #: AMRe21349**



## Summary

<b>Production Name</b>	CREB-1 Rabbit Monoclonal Antibody
<b>Description</b>	Rabbit Monoclonal Antibody
<b>Host</b>	Rabbit
<b>Application</b>	WB,IHC,IF,IP,ELISA
<b>Reactivity</b>	Human,Mouse,Rat

## Performance

<b>Conjugation</b>	Unconjugated
<b>Modification</b>	Unmodified
<b>Isotype</b>	IgG,Kappa
<b>Clonality</b>	Monoclonal
<b>Form</b>	Liquid
<b>Storage</b>	Store at 4°C short term. Aliquot and store at -20°C long term. Avoid freeze/thaw cycles.
<b>Buffer</b>	PBS, 50% glycerol, 0.05% Proclin 300, 0.05%BSA
<b>Purification</b>	Protein A

## Immunogen

<b>Gene Name</b>	CREB1
<b>Alternative Names</b>	CREB1;Cyclic AMP-responsive element-binding protein 1;CREB-1;cAMP-responsive element-binding protein 1
<b>Gene ID</b>	1385
<b>SwissProt ID</b>	P16220.

## Application

<b>Dilution Ratio</b>	IHC 1:2000-1:10000;WB 1:2000-1:10000;IF 1:200-1:1000;ELISA 1:5000-1:20000;IP 1:50-1:200;
<b>Molecular Weight</b>	Calculated MW:37kD;Observed MW:43kD

## Background

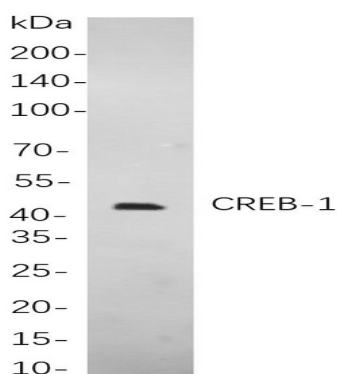
**Product Name: CREB-1 Rabbit Monoclonal Antibody**  
**Catalog #: AMRe21349**



Cell localization:Nucleus.This gene encodes a transcription factor that is a member of the leucine zipper family of DNA binding proteins. This protein binds as a homodimer to the cAMP-responsive element, an octameric palindrome. The protein is phosphorylated by several protein kinases, and induces transcription of genes in response to hormonal stimulation of the cAMP pathway. Alternate splicing of this gene results in several transcript variants encoding different isoforms. [provided by RefSeq, Mar 2016],

## Research Area

## Image Data



Western blot analysis of lysates from SH-SY5Y cells, using CREB-1 Rabbit mAb. The HRP-conjugated Goat anti-Rabbit IgG antibody was used to detect the antibody.

## Note

For research use only.