

Summary

Production Name	Sumo 1 Rabbit Monoclonal Antibody
Description	Rabbit Monoclonal Antibody
Host	Rabbit
Application	WB,IHC,IF,IP,ELISA
Reactivity	Human,Mouse,Rat

Performance

Conjugation	Unconjugated
Modification	Unmodified
Isotype	IgG,Kappa
Clonality	Monoclonal
Form	Liquid
Storage	Store at 4°C short term. Aliquot and store at -20°C long term. Avoid freeze/thaw cycles.
Buffer	PBS, 50% glycerol, 0.05% Proclin 300, 0.05%BSA
Purification	Protein A

Immunogen

Gene Name	SUMO1 SUMO1;SMT3C;SMT3H3;UBL1;OK/SW-cl.43;Small ubiquitin-related modifier 1;SUMO-1;GAP-modifying protein 1;GMP1;SMT3 homolog 3;Sentrin;Ubiquitin-homology domain protein PIC1;Ubiquitin-like protein SMT3C;Smt3C;Ubiquitin-like protein
Alternative Names	
Gene ID	7341
SwissProt ID	P63165.

Application

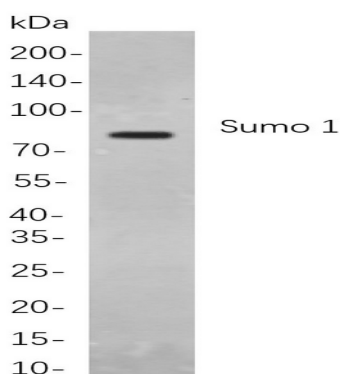
Dilution Ratio	IHC 1:2000-1:10000;WB 1:2000-1:10000;IF 1:200-1:1000;ELISA 1:5000-1:20000;IP 1:50-1:200;
Molecular Weight	Calculated MW:12kD;Observed MW:80kD

Background

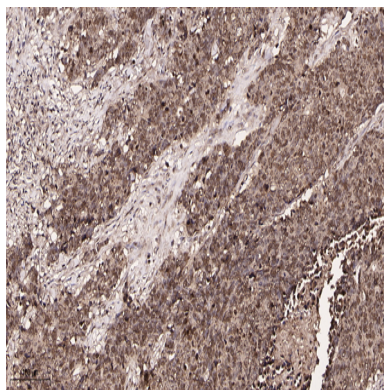
Cell localization: Cytoplasm, Nucleus. This gene encodes a protein that is a member of the SUMO (small ubiquitin-like modifier) protein family. It functions in a manner similar to ubiquitin in that it is bound to target proteins as part of a post-translational modification system. However, unlike ubiquitin which targets proteins for degradation, this protein is involved in a variety of cellular processes, such as nuclear transport, transcriptional regulation, apoptosis, and protein stability. It is not active until the last four amino acids of the carboxy-terminus have been cleaved off. Several pseudogenes have been reported for this gene. Alternate transcriptional splice variants encoding different isoforms have been characterized. [provided by RefSeq, Jul 2008],

Research Area

Image Data



Western blot analysis of lysates from Jurkat cells, using Sumo 1 Rabbit mAb. The HRP-conjugated Goat anti-Rabbit IgG antibody was used to detect the antibody.



Immunohistochemical analysis of paraffin-embedded Human lung carcinoma tissue. 1, primary Antibody was diluted at 1:200(4°C, overnight). 2, EDTA pH 9.0 was used for antibody retrieval(>98°C, 20min). 3, Secondary antibody was diluted at

Product Name: Sumo 1 Rabbit Monoclonal Antibody
Catalog #: AMRe21347



1:200(room temperature, 30min).

Note

For research use only.