

**Product Name: HO-1 Rabbit Monoclonal Antibody**  
**Catalog #: AMRe21346**



## Summary

<b>Production Name</b>	HO-1 Rabbit Monoclonal Antibody
<b>Description</b>	Rabbit Monoclonal Antibody
<b>Host</b>	Rabbit
<b>Application</b>	WB,IHC,IF,IP,ELISA
<b>Reactivity</b>	Human,Mouse,Rat

## Performance

<b>Conjugation</b>	Unconjugated
<b>Modification</b>	Unmodified
<b>Isotype</b>	IgG,Kappa
<b>Clonality</b>	Monoclonal
<b>Form</b>	Liquid
<b>Storage</b>	Store at 4°C short term. Aliquot and store at -20°C long term. Avoid freeze/thaw cycles.
<b>Buffer</b>	PBS, 50% glycerol, 0.05% Proclin 300, 0.05%BSA
<b>Purification</b>	Protein A

## Immunogen

<b>Gene Name</b>	HMOX1 HO HO1
<b>Alternative Names</b>	Heme oxygenase 1 (HO-1) (EC 1.14.99.3)
<b>Gene ID</b>	3162.0
<b>SwissProt ID</b>	P09601.

## Application

<b>Dilution Ratio</b>	IHC 1:2000-1:10000;WB 1:2000-1:10000;IF 1:200-1:1000;ELISA 1:5000-1:20000;IP 1:50-1:200;
<b>Molecular Weight</b>	Calculated MW:33kD;Observed MW:33kD

## Background

Cell localization:Endoplasmic reticulum membrane.heme oxygenase 1(HMOX1) Homo sapiens Heme oxygenase, an

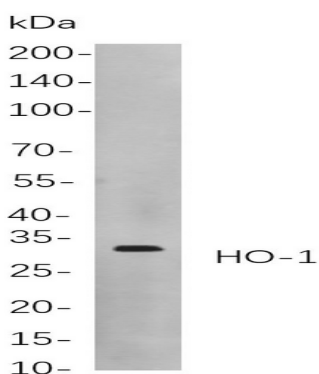
**Product Name: HO-1 Rabbit Monoclonal Antibody**  
**Catalog #: AMRe21346**



essential enzyme in heme catabolism, cleaves heme to form biliverdin, which is subsequently converted to bilirubin by biliverdin reductase, and carbon monoxide, a putative neurotransmitter. Heme oxygenase activity is induced by its substrate heme and by various nonheme substances. Heme oxygenase occurs as 2 isozymes, an inducible heme oxygenase-1 and a constitutive heme oxygenase-2. HMOX1 and HMOX2 belong to the heme oxygenase family. [provided by RefSeq, Jul 2008],

## Research Area

## Image Data



Western blot analysis of lysates from Rat spleen cells, using HO-1 Rabbit mAb. The HRP-conjugated Goat anti-Rabbit IgG antibody was used to detect the antibody.

## Note

For research use only.