

Product Name: HMGB1 Rabbit Monoclonal Antibody
Catalog #: AMRe21343



Summary

Production Name	HMGB1 Rabbit Monoclonal Antibody
Description	Rabbit Monoclonal Antibody
Host	Rabbit
Application	WB,IHC,IF,IP,ELISA
Reactivity	Human,Mouse,Rat

Performance

Conjugation	Unconjugated
Modification	Unmodified
Isotype	IgG,Kappa
Clonality	Monoclonal
Form	Liquid
Storage	Store at 4°C short term. Aliquot and store at -20°C long term. Avoid freeze/thaw cycles.
Buffer	PBS, 50% glycerol, 0.05% Proclin 300, 0.05%BSA
Purification	Protein A

Immunogen

Gene Name	HMGB1 HMG1
Alternative Names	High mobility group protein B1 (High mobility group protein 1) (HMG-1)
Gene ID	3146.0
SwissProt ID	P09429.

Application

Dilution Ratio	IHC 1:2000-1:10000;WB 1:5000-1:10000;IF 1:200-1:1000;ELISA 1:5000-1:20000;IP 1:50-1:200;
Molecular Weight	Calculated MW:25kD;Observed MW:25kD

Background

Cell localization:Nucleus.high mobility group box 1(HMGB1) Homo sapiens This gene encodes a protein that belongs

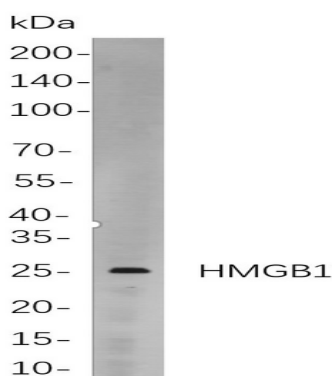
Product Name: HMGB1 Rabbit Monoclonal Antibody
Catalog #: AMRe21343



to the High Mobility Group-box superfamily. The encoded non-histone, nuclear DNA-binding protein regulates transcription, and is involved in organization of DNA. This protein plays a role in several cellular processes, including inflammation, cell differentiation and tumor cell migration. Multiple pseudogenes of this gene have been identified. Alternative splicing results in multiple transcript variants that encode the same protein. [provided by RefSeq, Sep 2015],

Research Area

Image Data



Western blot analysis of lysates from HeLa

cells, using HMGB1 Rabbit mAb. The HRP-conjugated Goat anti-Rabbit IgG antibody was used to detect the antibody.

Note

For research use only.