

Product Name: Integrin β 1 Rabbit Monoclonal Antibody
Catalog #: AMRe21338



Summary

Production Name	Integrin β 1 Rabbit Monoclonal Antibody
Description	Rabbit Monoclonal Antibody
Host	Rabbit
Application	WB,IHC,IF,IP,ELISA
Reactivity	Human,Mouse,Rat

Performance

Conjugation	Unconjugated
Modification	Unmodified
Isotype	IgG,Kappa
Clonality	Monoclonal
Form	Liquid
Storage	Store at 4°C short term. Aliquot and store at -20°C long term. Avoid freeze/thaw cycles.
Buffer	PBS, 50% glycerol, 0.05% Proclin 300, 0.05%BSA
Purification	Protein A

Immunogen

Gene Name	ITGB1
Alternative Names	ITGB1;FNRB;MDF2;MSK12;Integrin beta-1;Fibronectin receptor subunit beta;VLA-4 subunit beta;CD antigen CD29
Gene ID	3688
SwissProt ID	P05556.

Application

Dilution Ratio	IHC 1:2000-1:10000;WB 1:2000-1:10000;IF 1:200-1:1000;ELISA 1:5000-1:20000;IP 1:50-1:200;
Molecular Weight	Calculated MW:88kD;Observed MW:115-125kD

Background

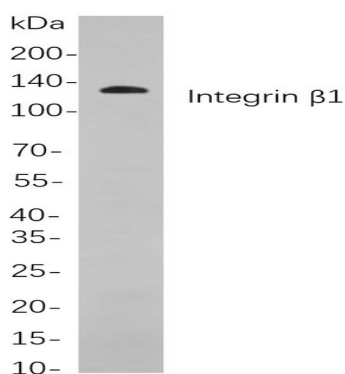
Product Name: Integrin β 1 Rabbit Monoclonal Antibody
Catalog #: AMRe21338



Cell localization:Membrane.Integrins are heterodimeric proteins made up of alpha and beta subunits. At least 18 alpha and 8 beta subunits have been described in mammals. Integrin family members are membrane receptors involved in cell adhesion and recognition in a variety of processes including embryogenesis, hemostasis, tissue repair, immune response and metastatic diffusion of tumor cells. This gene encodes a beta subunit. Multiple alternatively spliced transcript variants which encode different protein isoforms have been found for this gene. [provided by RefSeq, Jul 2008],

Research Area

Image Data



Western blot analysis of lysates from 3T3-L1

cells, using Integrin β 1 Rabbit mAb. The HRP-conjugated Goat anti-Rabbit IgG antibody was used to detect the antibody.

Note

For research use only.