

Product Name: ERK1/2 Rabbit Monoclonal Antibody
Catalog #: AMRe21337



Summary

Production Name	ERK1/2 Rabbit Monoclonal Antibody
Description	Rabbit Monoclonal Antibody
Host	Rabbit
Application	WB,IHC,IF,IP,ELISA
Reactivity	Human,Mouse,Rat

Performance

Conjugation	Unconjugated
Modification	Unmodified
Isotype	IgG,Kappa
Clonality	Monoclonal
Form	Liquid
Storage	Store at 4°C short term. Aliquot and store at -20°C long term. Avoid freeze/thaw cycles.
Buffer	PBS, 50% glycerol, 0.05% Proclin 300, 0.05%BSA
Purification	Protein A

Immunogen

Gene Name	MAPK1/MAPK3 MAPK3;ERK1;PRKM3;Mitogen-activated protein kinase 3;MAP kinase 3;MAPK 3;ERT2;Extracellular signal-regulated kinase 1;ERK-1;Insulin-stimulated MAP2 kinase;MAP kinase isoform p44;p44-MAPK;Microtubule-associated protein 2 kinase;p
Alternative Names	
Gene ID	5595;5594
SwissProt ID	P28482,P27361.

Application

Dilution Ratio	IHC 1:2000-1:10000;WB 1:2000-1:10000;IF 1:200-1:1000;ELISA 1:5000-1:20000;IP 1:50-1:200;
Molecular Weight	Calculated MW:43kD,41kD;Observed MW:43kD,41kD

Product Name: ERK1/2 Rabbit Monoclonal Antibody
Catalog #: AMRe21337

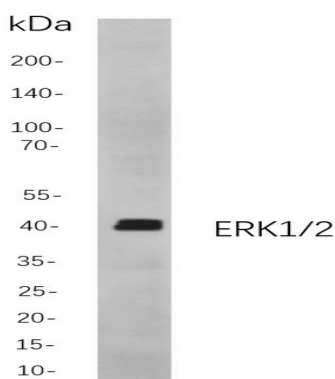


Background

Cell localization: Cytoplasm, Nucleus. The protein encoded by this gene is a member of the MAP kinase family. MAP kinases, also known as extracellular signal-regulated kinases (ERKs), act in a signaling cascade that regulates various cellular processes such as proliferation, differentiation, and cell cycle progression in response to a variety of extracellular signals. This kinase is activated by upstream kinases, resulting in its translocation to the nucleus where it phosphorylates nuclear targets. Alternatively spliced transcript variants encoding different protein isoforms have been described. [provided by RefSeq, Jul 2008],

Research Area

Image Data



Western blot analysis of lysates from 3T3-L1

cells, using ERK1/2 Rabbit mAb. The HRP-conjugated Goat anti-Rabbit IgG antibody was used to detect the antibody.

Note

For research use only.