

Product Name: Vimentin Rabbit Monoclonal Antibody
Catalog #: AMRe21330



Summary

Production Name	Vimentin Rabbit Monoclonal Antibody
Description	Rabbit Monoclonal Antibody
Host	Rabbit
Application	WB,IHC,IF,IP,ELISA
Reactivity	Human,Mouse,Rat

Performance

Conjugation	Unconjugated
Modification	Unmodified
Isotype	IgG,Kappa
Clonality	Monoclonal
Form	Liquid
Storage	Store at 4°C short term. Aliquot and store at -20°C long term. Avoid freeze/thaw cycles.
Buffer	PBS, 50% glycerol, 0.05% Proclin 300, 0.05%BSA
Purification	Protein A

Immunogen

Gene Name	VIM
Alternative Names	VIM;Vimentin
Gene ID	7431
SwissProt ID	P08670.

Application

Dilution Ratio	IHC 1:1000-1:5000;WB 1:1000-1:5000;IF 1:200-1:1000;ELISA 1:5000-1:20000;IP 1:50-1:200;
Molecular Weight	Calculated MW:54kD;Observed MW:54kD

Background

Cell localization:Cytoplasm.This gene encodes a member of the intermediate filament family. Intermediate filamentents,

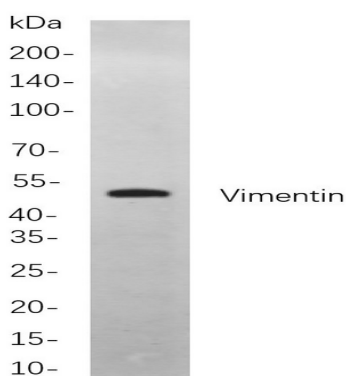
Product Name: Vimentin Rabbit Monoclonal Antibody
Catalog #: AMRe21330



along with microtubules and actin microfilaments, make up the cytoskeleton. The protein encoded by this gene is responsible for maintaining cell shape, integrity of the cytoplasm, and stabilizing cytoskeletal interactions. It is also involved in the immune response, and controls the transport of low-density lipoprotein (LDL)-derived cholesterol from a lysosome to the site of esterification. It functions as an organizer of a number of critical proteins involved in attachment, migration, and cell signaling. Mutations in this gene causes a dominant, pulverulent cataract.[provided by RefSeq, Jun 2009],

Research Area

Image Data



Western blot analysis of lysates from HeLa

cells, using Vimentin Rabbit mAb. The HRP-conjugated Goat anti-Rabbit IgG antibody was used to detect the antibody.

Note

For research use only.