

Product Name: ERK5 Rabbit Monoclonal Antibody
Catalog #: AMRe21301



Summary

Production Name	ERK5 Rabbit Monoclonal Antibody
Description	Rabbit Monoclonal Antibody
Host	Rabbit
Application	WB,IF,IP,ELISA
Reactivity	Human,Mouse,Rat

Performance

Conjugation	Unconjugated
Modification	Unmodified
Isotype	IgG,Kappa
Clonality	Monoclonal
Form	Liquid
Storage	Store at 4°C short term. Aliquot and store at -20°C long term. Avoid freeze/thaw cycles.
Buffer	PBS, 50% glycerol, 0.05% Proclin 300, 0.05%BSA
Purification	Protein A

Immunogen

Gene Name	MAPK7,ERK5
Alternative Names	MAPK7;BMK1;ERK5;PRKM7;Mitogen-activated protein kinase 7;MAP kinase 7;MAPK 7;Big MAP kinase 1;BMK-1;Extracellular signal-regulated kinase 5;ERK-5
Gene ID	5598
SwissProt ID	Q13164.

Application

Dilution Ratio	IHC ;WB 1:2000-1:10000;IF 1:200-1:1000;ELISA 1:5000-1:20000;IP 1:50-1:200;
Molecular Weight	Calculated MW:88kD;Observed MW:115kD

Background

Cell localization:Cytoplasm, Nucleus.The protein encoded by this gene is a member of the MAP kinase family. MAP kinases

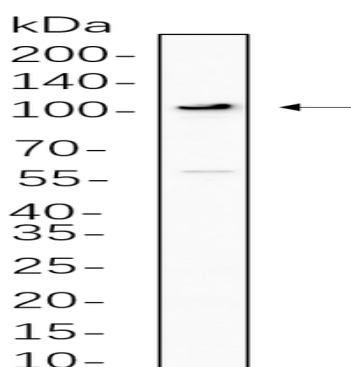
Product Name: ERK5 Rabbit Monoclonal Antibody
Catalog #: AMRe21301



act as an integration point for multiple biochemical signals, and are involved in a wide variety of cellular processes such as proliferation, differentiation, transcription regulation and development. This kinase is specifically activated by mitogen-activated protein kinase kinase 5 (MAP2K5/MEK5). It is involved in the downstream signaling processes of various receptor molecules including receptor type kinases, and G protein-coupled receptors. In response to extracellular signals, this kinase translocates to cell nucleus, where it regulates gene expression by phosphorylating, and activating different transcription factors. Four alternatively spliced transcript variants of this gene encoding two distinct isoforms have been reported. [provided by RefSeq, Jul 2008],

Research Area

Image Data



Hela cell lysates were separated by 4-20% SDS-PAGE, and the membrane was blotted with primary antibody 1:1000. The HRP-conjugated Goat anti-Rabbit IgG(H + L) antibody was used to detect the antibody.

Note

For research use only.