

**Product Name: PDI Rabbit Monoclonal Antibody**  
**Catalog #: AMRe21290**



## Summary

|                        |                                |
|------------------------|--------------------------------|
| <b>Production Name</b> | PDI Rabbit Monoclonal Antibody |
| <b>Description</b>     | Rabbit Monoclonal Antibody     |
| <b>Host</b>            | Rabbit                         |
| <b>Application</b>     | WB,IHC,IF,IP,ELISA             |
| <b>Reactivity</b>      | Human,Mouse,Rat                |

## Performance

|                     |  |
|---------------------|--|
| <b>Conjugation</b>  | Unconjugated   |
| <b>Modification</b> | Unmodified   |
| <b>Isotype</b>      | IgG,Kappa  |
| <b>Clonality</b>    | Monoclonal   |
| <b>Form</b>         | Liquid   |
| <b>Storage</b>      | Store at 4°C short term. Aliquot and store at -20°C long term. Avoid freeze/thaw cycles. |
| <b>Buffer</b>       | PBS, 50% glycerol, 0.05% Proclin 300, 0.05%BSA   |
| <b>Purification</b> | Protein A  |

## Immunogen

|                          |                        |
|--------------------------|------------------------|
| <b>Gene Name</b>         | P4HB                   |
| <b>Alternative Names</b> | ERBA2L PDI PDIA1 PO4DB |
| <b>Gene ID</b>           | 5034.0                 |
| <b>SwissProt ID</b>      | P07237.                |

## Application

|                         |  |
|-------------------------|--|
| <b>Dilution Ratio</b>   | IHC 1:200-1:1000;WB 1:2000-1:10000;IF 1:200-1:1000;ELISA 1:5000-1:20000;IP 1:50-1:200; |
| <b>Molecular Weight</b> | Calculated MW:57kD;Observed MW:57kD  |

## Background

Cell localization:Endoplasmic reticulum.This gene encodes the beta subunit of prolyl 4-hydroxylase, a highly abundant

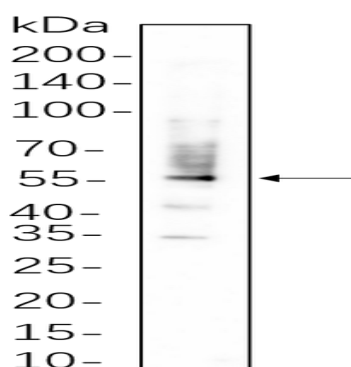
**Product Name: PDI Rabbit Monoclonal Antibody**  
**Catalog #: AMRe21290**



multifunctional enzyme that belongs to the protein disulfide isomerase family. When present as a tetramer consisting of two alpha and two beta subunits, this enzyme is involved in hydroxylation of prolyl residues in procollagen. This enzyme is also a disulfide isomerase containing two thioredoxin domains that catalyze the formation, breakage and rearrangement of disulfide bonds. Other known functions include its ability to act as a chaperone that inhibits aggregation of misfolded proteins in a concentration-dependent manner, its ability to bind thyroid hormone, its role in both the influx and efflux of S-nitrosothiol-bound nitric oxide, and its function as a subunit of the microsomal triglyceride transfer protein complex.  
[provided by RefSeq, Jul 2008]

## Research Area

## Image Data



Hela whole cell lysates were separated by 10% SDS-PAGE, and the membrane was blotted with primary antibody(1:1000).  
The HRP-conjugated Goat anti-Rabbit IgG(H + L) antibody was used to detect the antibody.

## Note

For research use only.