

**Product Name: DNA PKcs Rabbit Monoclonal Antibody**  
**Catalog #: AMRe21286**



## Summary

<b>Production Name</b>	DNA PKcs Rabbit Monoclonal Antibody
<b>Description</b>	Rabbit Monoclonal Antibody
<b>Host</b>	Rabbit
<b>Application</b>	WB,IHC,IF,IP,ELISA
<b>Reactivity</b>	Human,Mouse,Rat

## Performance

<b>Conjugation</b>	Unconjugated
<b>Modification</b>	Unmodified
<b>Isotype</b>	IgG,Kappa
<b>Clonality</b>	Monoclonal
<b>Form</b>	Liquid
<b>Storage</b>	Store at 4°C short term. Aliquot and store at -20°C long term. Avoid freeze/thaw cycles.
<b>Buffer</b>	PBS, 50% glycerol, 0.05% Proclin 300, 0.05%BSA
<b>Purification</b>	Protein A

## Immunogen

<b>Gene Name</b>	PRKDC
<b>Alternative Names</b>	PRKDC;HYRC;HYRC1;DNA-dependent protein kinase catalytic subunit;DNA-PK catalytic subunit;DNA-PKcs;DNPK1;p460
<b>Gene ID</b>	5591.0
<b>SwissProt ID</b>	P78527.

## Application

<b>Dilution Ratio</b>	IHC 1:200-1:1000;WB 1:2000-1:10000;IF 1:200-1:1000;ELISA 1:5000-1:20000;IP 1:50-1:200;
<b>Molecular Weight</b>	Calculated MW:469kD;Observed MW:469kD

## Background

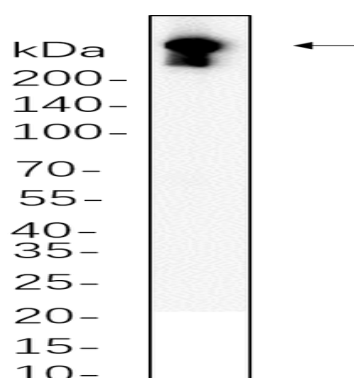
**Product Name: DNA PKcs Rabbit Monoclonal Antibody**  
**Catalog #: AMRe21286**



Cell localization:Nucleus.This gene encodes the catalytic subunit of the DNA-dependent protein kinase (DNA-PK). It functions with the Ku70/Ku80 heterodimer protein in DNA double strand break repair and recombination. The protein encoded is a member of the PI3/PI4-kinase family.[provided by RefSeq, Jul 2010],

## Research Area

## Image Data



HT-29 whole cell lysates were separated by 10% SDS-PAGE, and the membrane was blotted with primary antibody(1:1000).  
The HRP-conjugated Goat anti-Rabbit IgG(H + L) antibody was used to detect the antibody.

## Note

For research use only.