

Product Name: 4E-BP1 Rabbit Monoclonal Antibody
Catalog #: AMRe21279



Summary

Production Name	4E-BP1 Rabbit Monoclonal Antibody
Description	Rabbit Monoclonal Antibody
Host	Rabbit
Application	WB,IHC,IF,IP,ELISA
Reactivity	Human,Mouse,Rat

Performance

Conjugation	Unconjugated
Modification	Unmodified
Isotype	IgG,Kappa
Clonality	Monoclonal
Form	Liquid
Storage	Store at 4°C short term. Aliquot and store at -20°C long term. Avoid freeze/thaw cycles.
Buffer	PBS, 50% glycerol, 0.05% Proclin 300, 0.05%BSA
Purification	Protein A

Immunogen

Gene Name	EIF4EBP1 EIF4EBP1;Eukaryotic translation initiation factor 4E-binding protein 1;4E-BP1;eIF4E-
Alternative Names	binding protein 1;Phosphorylated heat- and acid-stable protein regulated by insulin 1;PHAS-I
Gene ID	1978.0
SwissProt ID	Q13541.

Application

Dilution Ratio	IHC 1:200-1:1000;WB 1:2000-1:10000;IF 1:200-1:1000;ELISA 1:5000-1:20000;IP 1:50- 1:200;
Molecular Weight	Calculated MW:13kD;Observed MW:17kD

Product Name: 4E-BP1 Rabbit Monoclonal Antibody
Catalog #: AMRe21279

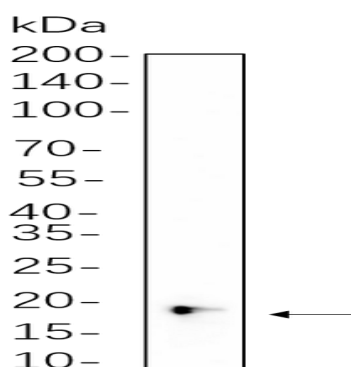


Background

Cell localization:Nucleus.This gene encodes one member of a family of translation repressor proteins. The protein directly interacts with eukaryotic translation initiation factor 4E (eIF4E), which is a limiting component of the multisubunit complex that recruits 40S ribosomal subunits to the 5' end of mRNAs. Interaction of this protein with eIF4E inhibits complex assembly and represses translation. This protein is phosphorylated in response to various signals including UV irradiation and insulin signaling, resulting in its dissociation from eIF4E and activation of mRNA translation. [provided by RefSeq, Jul 2008],

Research Area

Image Data



Jurkat cell lysates were separated by 4-20% SDS-PAGE, and the membrane was blotted with primary antibody 1:1000. The HRP-conjugated Goat anti-Rabbit IgG(H + L) antibody was used to detect the antibody.

Note

For research use only.