

Summary

Production Name	PKC δ Rabbit Monoclonal Antibody
Description	Rabbit Monoclonal Antibody
Host	Rabbit
Application	WB,IHC,IF,IP,ELISA
Reactivity	Human,Mouse,Rat

Performance

Conjugation	Unconjugated
Modification	Unmodified
Isotype	IgG,Kappa
Clonality	Monoclonal
Form	Liquid
Storage	Store at 4°C short term. Aliquot and store at -20°C long term. Avoid freeze/thaw cycles.
Buffer	PBS, 50% glycerol, 0.05% Proclin 300, 0.05%BSA
Purification	Protein A

Immunogen

Gene Name	PRKCD
Alternative Names	PRKCD;Protein kinase C delta type;Tyrosine-protein kinase PRKCD;nPKC-delta
Gene ID	5580.0
SwissProt ID	Q05655.

Application

Dilution Ratio	IHC 1:500-1:2000;WB 1:2000-1:10000;IF 1:200-1:1000;ELISA 1:5000-1:20000;IP 1:50-1:200;
Molecular Weight	Calculated MW:78kD;Observed MW:78kD

Background

Cell localization:Cytoplasm, Nucleus.Protein kinase C (PKC) is a family of serine- and threonine-specific protein kinases that

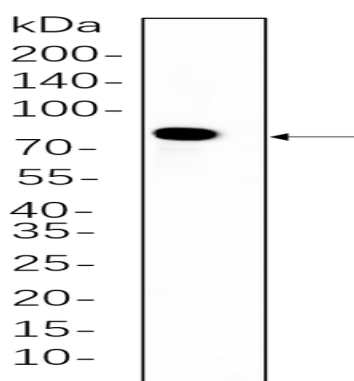
Product Name: PKC δ Rabbit Monoclonal Antibody
Catalog #: AMRe21275



can be activated by calcium and the second messenger diacylglycerol. PKC family members phosphorylate a wide variety of protein targets and are known to be involved in diverse cellular signaling pathways. PKC family members also serve as major receptors for phorbol esters, a class of tumor promoters. Each member of the PKC family has a specific expression profile and is believed to play distinct roles in cells. The protein encoded by this gene is one of the PKC family members. Studies both in human and mice demonstrate that this kinase is involved in B cell signaling and in the regulation of growth, apoptosis, and differentiation of a variety of cell types. Alternatively spliced transcript variants encoding the same protein have been observed. [provided by RefSeq, Jul 2008],

Research Area

Image Data



K562 whole cell lysates were separated by 10% SDS-PAGE, and the membrane was blotted with primary antibody(1:1000).
The HRP-conjugated Goat anti-Rabbit IgG(H + L) antibody was used to detect the antibody.

Note

For research use only.