

Product Name: SH-PTP2 Rabbit Monoclonal Antibody
Catalog #: AMRe21267



Summary

Production Name	SH-PTP2 Rabbit Monoclonal Antibody
Description	Rabbit Monoclonal Antibody
Host	Rabbit
Application	WB,IHC,IF,IP,ELISA
Reactivity	Human,Mouse,Rat

Performance

Conjugation	Unconjugated
Modification	Unmodified
Isotype	IgG,Kappa
Clonality	Monoclonal
Form	Liquid
Storage	Store at 4°C short term. Aliquot and store at -20°C long term. Avoid freeze/thaw cycles.
Buffer	PBS, 50% glycerol, 0.05% Proclin 300, 0.05%BSA
Purification	Protein A

Immunogen

Gene Name	PTPN11
Alternative Names	PTPN11;PTP2C;SHPTP2;Tyrosine-protein phosphatase non-receptor type 11;Protein-tyrosine phosphatase 1D;PTP-1D;Protein-tyrosine phosphatase 2C;PTP-2C;SH-PTP2;SHP-2;Shp2;SH-PTP3
Gene ID	5781.0
SwissProt ID	Q06124.

Application

Dilution Ratio	IHC 1:2000-1:8000;WB 1:2000-1:10000;IF 1:200-1:1000;ELISA 1:5000-1:20000;IP 1:50-1:200;
Molecular Weight	Calculated MW:68kD;Observed MW:68kD

Product Name: SH-PTP2 Rabbit Monoclonal Antibody
Catalog #: AMRe21267

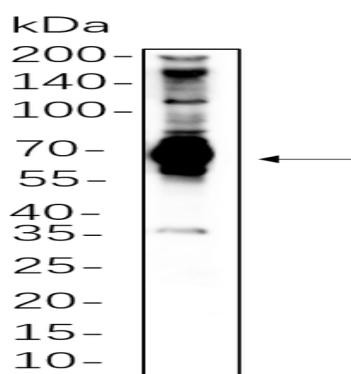


Background

Cell localization: Cytoplasm, Nucleus. The protein encoded by this gene is a member of the protein tyrosine phosphatase (PTP) family. PTPs are known to be signaling molecules that regulate a variety of cellular processes including cell growth, differentiation, mitotic cycle, and oncogenic transformation. This PTP contains two tandem Src homology-2 domains, which function as phospho-tyrosine binding domains and mediate the interaction of this PTP with its substrates. This PTP is widely expressed in most tissues and plays a regulatory role in various cell signaling events that are important for a diversity of cell functions, such as mitogenic activation, metabolic control, transcription regulation, and cell migration. Mutations in this gene are a cause of Noonan syndrome as well as acute myeloid leukemia. [provided by RefSeq, Aug 2016],

Research Area

Image Data



HeLa whole cell lysates were separated by 10% SDS-PAGE, and the membrane was blotted with primary antibody (1:1000). The HRP-conjugated Goat anti-Rabbit IgG(H + L) antibody was used to detect the antibody.

Note

For research use only.