

**Product Name: PDGFR- $\alpha$  Rabbit Monoclonal Antibody**  
**Catalog #: AMRe21266**



## Summary

|                        |  |
|------------------------|--|
| <b>Production Name</b> | PDGFR- $\alpha$ Rabbit Monoclonal Antibody |
| <b>Description</b>     | Rabbit Monoclonal Antibody                 |
| <b>Host</b>            | Rabbit                                     |
| <b>Application</b>     | WB,IF,IP,ELISA                             |
| <b>Reactivity</b>      | Human,Mouse,Rat                            |

## Performance

|                     |  |
|---------------------|--|
| <b>Conjugation</b>  | Unconjugated   |
| <b>Modification</b> | Unmodified   |
| <b>Isotype</b>      | IgG,Kappa  |
| <b>Clonality</b>    | Monoclonal   |
| <b>Form</b>         | Liquid   |
| <b>Storage</b>      | Store at 4°C short term. Aliquot and store at -20°C long term. Avoid freeze/thaw cycles. |
| <b>Buffer</b>       | PBS, 50% glycerol, 0.05% Proclin 300, 0.05%BSA   |
| <b>Purification</b> | Protein A  |

## Immunogen

|                          |  |
|--------------------------|--|
| <b>Gene Name</b>         | PDGFRA<br>Platelet-derived growth factor receptor alpha;PDGF-R-alpha;PDGFR-alpha;Alpha platelet-derived growth factor receptor;Alpha-type platelet-derived growth factor receptor;CD140 antigen-like family member A;CD140a antigen;Platelet-derived growth factor alpha receptor;Platelet-derived growth factor receptor 2;PDGFR-2;CD antigen CD140a; |
| <b>Alternative Names</b> |  |
| <b>Gene ID</b>           | 5156.0   |
| <b>SwissProt ID</b>      | P16234.  |

## Application

|                         |   |
|-------------------------|---|
| <b>Dilution Ratio</b>   | WB 1:2000-1:10000;IF 1:200-1:1000;ELISA 1:5000-1:20000;IP 1:50-1:200; |
| <b>Molecular Weight</b> | Calculated MW:123kD;Observed MW:190kD                                 |

**Product Name: PDGFR- $\alpha$  Rabbit Monoclonal Antibody**  
**Catalog #: AMRe21266**

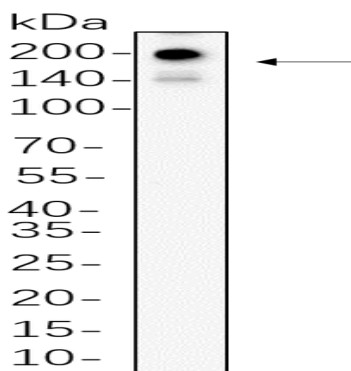


## Background

Cell localization: Cell membrane ; Single-pass type I membrane protein . Cell projection, cilium . Golgi apparatus ..platelet derived growth factor receptor alpha(PDGFR $\alpha$ ) Homo sapiens This gene encodes a cell surface tyrosine kinase receptor for members of the platelet-derived growth factor family. These growth factors are mitogens for cells of mesenchymal origin. The identity of the growth factor bound to a receptor monomer determines whether the functional receptor is a homodimer or a heterodimer, composed of both platelet-derived growth factor receptor alpha and beta polypeptides. Studies suggest that this gene plays a role in organ development, wound healing, and tumor progression. Mutations in this gene have been associated with idiopathic hypereosinophilic syndrome, somatic and familial gastrointestinal stromal tumors, and a variety of other cancers. [provided by RefSeq, Mar 2012],

## Research Area

## Image Data



MG-63 whole cell lysates were separated by 10% SDS-PAGE, and the membrane was blotted with primary antibody(1:1000).  
The HRP-conjugated Goat anti-Rabbit IgG(H + L) antibody was used to detect the antibody.

## Note

For research use only.