

**Product Name: Src Rabbit Monoclonal Antibody**  
**Catalog #: AMRe21265**

---

## Summary

<b>Production Name</b>	Src Rabbit Monoclonal Antibody
<b>Description</b>	Rabbit Monoclonal Antibody
<b>Host</b>	Rabbit
<b>Application</b>	WB,IHC,IF,IP,ELISA
<b>Reactivity</b>	Human,Mouse,Rat

## Performance

<b>Conjugation</b>	Unconjugated
<b>Modification</b>	Unmodified
<b>Isotype</b>	IgG,Kappa
<b>Clonality</b>	Monoclonal
<b>Form</b>	Liquid
<b>Storage</b>	Store at 4°C short term. Aliquot and store at -20°C long term. Avoid freeze/thaw cycles.
<b>Buffer</b>	PBS, 50% glycerol, 0.05% Proclin 300, 0.05%BSA
<b>Purification</b>	Protein A

## Immunogen

<b>Gene Name</b>	SRC SRC1
<b>Alternative Names</b>	Proto-oncogene tyrosine-protein kinase Src;Proto-oncogene c-Src;pp60c-src;p60-Src;
<b>Gene ID</b>	6714.0
<b>SwissProt ID</b>	P12931.

## Application

<b>Dilution Ratio</b>	IHC 1:1000-1:4000;WB 1:2000-1:10000;IF 1:200-1:1000;ELISA 1:5000-1:20000;IP 1:50-1:200;
<b>Molecular Weight</b>	Calculated MW:60kD;Observed MW:60kD

## Background

Cell localization:Cytoplasm, Nucleus.This gene is highly similar to the v-src gene of Rous sarcoma virus. This proto-

---

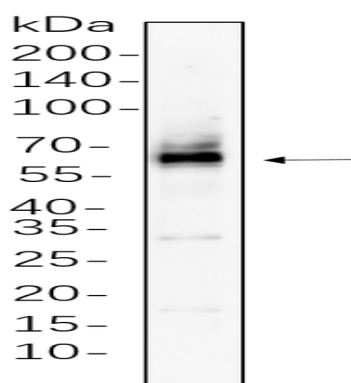
**Product Name: Src Rabbit Monoclonal Antibody**  
**Catalog #: AMRe21265**



oncogene may play a role in the regulation of embryonic development and cell growth. The protein encoded by this gene is a tyrosine-protein kinase whose activity can be inhibited by phosphorylation by c-SRC kinase. Mutations in this gene could be involved in the malignant progression of colon cancer. Two transcript variants encoding the same protein have been found for this gene. [provided by RefSeq, Jul 2008],

## Research Area

## Image Data



Hela whole cell lysates were separated by 10% SDS-PAGE, and the membrane was blotted with primary antibody(1:1000).  
The HRP-conjugated Goat anti-Rabbit IgG(H + L) antibody was used to detect the antibody.

## Note

For research use only.