

**Product Name: GAPDH Rabbit Monoclonal Antibody**  
**Catalog #: AMRe21263**



## Summary

<b>Production Name</b>	GAPDH Rabbit Monoclonal Antibody
<b>Description</b>	Rabbit Monoclonal antibody
<b>Host</b>	Rabbit
<b>Application</b>	WB,IHC,IF,IP,ELISA
<b>Reactivity</b>	Human,Mouse,Rat

## Performance

<b>Conjugation</b>	Unconjugated
<b>Modification</b>	Unmodified
<b>Isotype</b>	IgG,Kappa
<b>Clonality</b>	Monoclonal
<b>Form</b>	Liquid
<b>Storage</b>	Store at 4°C short term. Aliquot and store at -20°C long term. Avoid freeze/thaw cycles.
<b>Buffer</b>	PBS, 50% glycerol, 0.05% Proclin 300, 0.05%BSA
<b>Purification</b>	Protein A

## Immunogen

<b>Gene Name</b>	GAPDH
<b>Alternative Names</b>	GAPDH;GAPD;CDABP0047;OK/SW-cl.12;Glyceraldehyde-3-phosphate dehydrogenase;GAPDH;Peptidyl-cysteine S-nitrosylase GAPDH
<b>Gene ID</b>	2597.0
<b>SwissProt ID</b>	P04406.

## Application

<b>Dilution Ratio</b>	IHC 1:2000-1:5000;WB 1:10000-1:50000;IF 1:200-1:1000;ELISA 1:5000-1:20000;IP 1:50-1:200;
<b>Molecular Weight</b>	Calculated MW:38kD;Observed MW:38kD

**Product Name: GAPDH Rabbit Monoclonal Antibody**  
**Catalog #: AMRe21263**

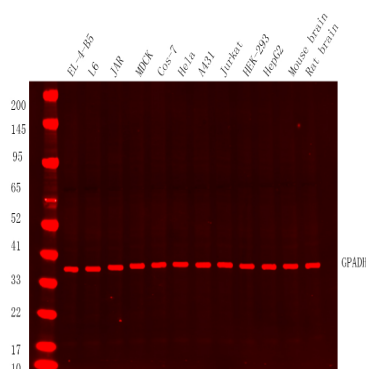


## Background

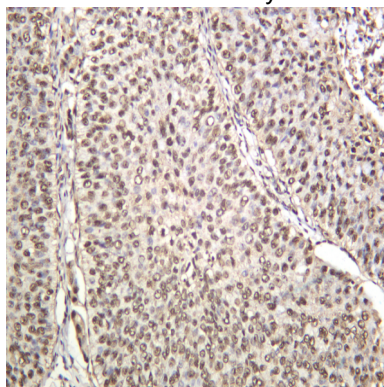
Cell localization: Cytoplasm, Nucleus. glyceraldehyde-3-phosphate dehydrogenase (GAPDH) Homo sapiens This gene encodes a member of the glyceraldehyde-3-phosphate dehydrogenase protein family. The encoded protein has been identified as a moonlighting protein based on its ability to perform mechanistically distinct functions. The product of this gene catalyzes an important energy-yielding step in carbohydrate metabolism, the reversible oxidative phosphorylation of glyceraldehyde-3-phosphate in the presence of inorganic phosphate and nicotinamide adenine dinucleotide (NAD). The encoded protein has additionally been identified to have uracil DNA glycosylase activity in the nucleus. Also, this protein contains a peptide that has antimicrobial activity against *E. coli*, *P. aeruginosa*, and *C. albicans*. Studies of a similar protein in mouse have assigned a variety of additional functions including nitrosylation of nuclear proteins, the regulation of mRNA stability, and acting as a transferri

## Research Area

## Image Data

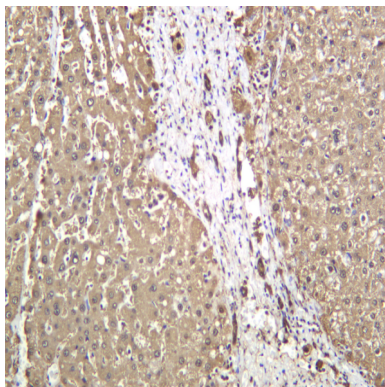


Western Blot analysis using Various whole cell lysates were separated by 4-20% SDS-PAGE, and the membrane was blotted with anti-GAPDH Rabbit antibody diluted at 1:20000.

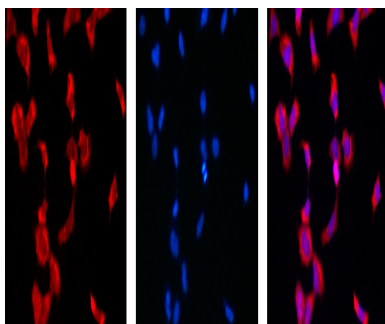


Human bladder carcinoma was stained with anti-GAPDH Rabbit antibody

**Product Name: GAPDH Rabbit Monoclonal Antibody**  
**Catalog #: AMRe21263**



Human liver was stained with anti-GAPDH Rabbit antibody



A

B

C

Immunofluorescence analysis of HEK293. Picture A: GAPDH antibody (red). Picture B: DAPI (blue). Picture C: Merge of A+B

## Note

For research use only.