

**Product Name: mtTFA Rabbit Monoclonal Antibody**  
**Catalog #: AMRe21262**



## Summary

<b>Production Name</b>	mtTFA Rabbit Monoclonal Antibody
<b>Description</b>	Rabbit Monoclonal Antibody
<b>Host</b>	Rabbit
<b>Application</b>	WB,IHC,IF,IP,ELISA
<b>Reactivity</b>	Human,Mouse,Rat

## Performance

<b>Conjugation</b>	Unconjugated
<b>Modification</b>	Unmodified
<b>Isotype</b>	IgG,Kappa
<b>Clonality</b>	Monoclonal
<b>Form</b>	Liquid
<b>Storage</b>	Store at 4°C short term. Aliquot and store at -20°C long term. Avoid freeze/thaw cycles.
<b>Buffer</b>	PBS, 50% glycerol, 0.05% Proclin 300, 0.05%BSA
<b>Purification</b>	Protein A

## Immunogen

<b>Gene Name</b>	TFAM
<b>Alternative Names</b>	TFAM;TCF6;TCF6L2;Transcription factor A;mitochondrial;mtTFA;Mitochondrial transcription factor 1;MtTF1;Transcription factor 6;TCF-6;Transcription factor 6-like 2
<b>Gene ID</b>	7019.0
<b>SwissProt ID</b>	Q00059.

## Application

<b>Dilution Ratio</b>	IHC 1:200-1:1000;WB 1:2000-1:10000;IF 1:200-1:1000;ELISA 1:5000-1:20000;IP 1:50-1:200;
<b>Molecular Weight</b>	Calculated MW:29kD;Observed MW:24kD

## Background

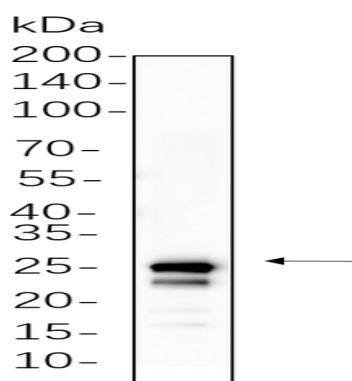
**Product Name: mtTFA Rabbit Monoclonal Antibody**  
**Catalog #: AMRe21262**



Cell localization: Mitochondrion. This gene encodes a key mitochondrial transcription factor containing two high mobility group motifs. The encoded protein also functions in mitochondrial DNA replication and repair. Sequence polymorphisms in this gene are associated with Alzheimer's and Parkinson's diseases. There are pseudogenes for this gene on chromosomes 6, 7, and 11. Alternative splicing results in multiple transcript variants. [provided by RefSeq, Aug 2012],

## Research Area

## Image Data



K562 cell lysates were separated by 4-20% SDS-PAGE, and the membrane was blotted with primary antibody 1:1000. The HRP-conjugated Goat anti-Rabbit IgG(H + L) antibody was used to detect the antibody.

## Note

For research use only.