

**Product Name: CD11b Rabbit Monoclonal Antibody**  
**Catalog #: AMRe21256**



## Summary

<b>Production Name</b>	CD11b Rabbit Monoclonal Antibody
<b>Description</b>	Rabbit Monoclonal Antibody
<b>Host</b>	Rabbit
<b>Application</b>	WB,IHC,IF,IP,ELISA
<b>Reactivity</b>	Human,Mouse,Rat

## Performance

<b>Conjugation</b>	Unconjugated
<b>Modification</b>	Unmodified
<b>Isotype</b>	IgG,Kappa
<b>Clonality</b>	Monoclonal
<b>Form</b>	Liquid
<b>Storage</b>	Store at 4°C short term. Aliquot and store at -20°C long term. Avoid freeze/thaw cycles.
<b>Buffer</b>	PBS, 50% glycerol, 0.05% Proclin 300, 0.05%BSA
<b>Purification</b>	Protein A

## Immunogen

<b>Gene Name</b>	ITGAM
<b>Alternative Names</b>	Integrin alpha-M;CD11 antigen-like family member B;CR-3 alpha chain;Cell surface glycoprotein MAC-1 subunit alpha;Leukocyte adhesion receptor MO1;Neutrophil adherence receptor;CD antigen CD11b;
<b>Gene ID</b>	3684.0
<b>SwissProt ID</b>	P11215.

## Application

<b>Dilution Ratio</b>	IHC 1:4000-1:20000;WB 1:2000-1:10000;IF 1:200-1:1000;ELISA 1:5000-1:20000;IP 1:50-1:200;
<b>Molecular Weight</b>	Calculated MW:127kD;Observed MW:170kD

**Product Name: CD11b Rabbit Monoclonal Antibody**  
**Catalog #: AMRe21256**

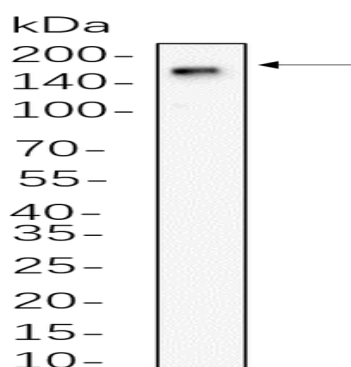


## Background

Cell localization:Membrane.integrin subunit alpha M(ITGAM) Homo sapiens This gene encodes the integrin alpha M chain. Integrins are heterodimeric integral membrane proteins composed of an alpha chain and a beta chain. This I-domain containing alpha integrin combines with the beta 2 chain (ITGB2) to form a leukocyte-specific integrin referred to as macrophage receptor 1 ('Mac-1'), or inactivated-C3b (iC3b) receptor 3 ('CR3'). The alpha M beta 2 integrin is important in the adherence of neutrophils and monocytes to stimulated endothelium, and also in the phagocytosis of complement coated particles. Multiple transcript variants encoding different isoforms have been found for this gene. [provided by RefSeq, Mar 2009],

## Research Area

## Image Data



Mouse spleen whole cell lysates were separated by 10% SDS-PAGE, and the membrane was blotted with primary antibody(1:1000). The HRP-conjugated Goat anti-Rabbit IgG(H + L) antibody was used to detect the antibody.

## Note

For research use only.