

Product Name: SGSH Rabbit Monoclonal Antibody
Catalog #: AMRe21245



Summary

Production Name	SGSH Rabbit Monoclonal Antibody
Description	Rabbit Monoclonal Antibody
Host	Rabbit
Application	WB,IHC,IF,ICC
Reactivity	Human

Performance

Conjugation	Unconjugated
Modification	Unmodified
Isotype	IgG,Kappa
Clonality	Monoclonal
Form	Liquid
Storage	Store at 4°C short term. Aliquot and store at -20°C long term. Avoid freeze/thaw cycles.
Buffer	PBS, 50% glycerol, 0.05% Proclin 300, 0.05%BSA
Purification	Protein A

Immunogen

Gene Name	SGSH;HSS
Alternative Names	SGSH;HSS;N-sulphoglucosamine sulphonydrolase ;Sulphoglucosamine sulfamidase;Sulphamidase;
Gene ID	6448.0
SwissProt ID	P51688.

Application

Dilution Ratio	WB 1:1000-5000;IHC 1:100-300;ICC/IF 1:100-300
Molecular Weight	Calculated MW;;Observed MW:55kD

Background

Cell localization:Lysosome..This gene encodes the enzyme sulfamidase; one of several enzymes involved in the lysosomal

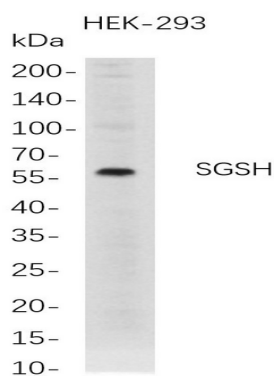
Product Name: SGSH Rabbit Monoclonal Antibody
Catalog #: AMRe21245



degradation of heparan sulfate. Mutations in this gene are associated with the lysosomal storage disease mucopolysaccharidosis IIIA, also known as Sanfilippo syndrome A, which results from impaired degradation of heparan sulfate. Transcripts of varying sizes have been reported but their biological validity has not been determined. [provided by RefSeq, Jun 2017]

Research Area

Image Data



Western Blot analysis of HEK-293 whole cell lysates were separated by 4-20% SDS-PAGE, and the membrane was blotted with anti-SGSH rabbit mAb. The HRP-conjugated Goat anti-Rabbit IgG(H + L) antibody was used to detect the antibody.

Note

For research use only.