

Product Name: RBMY1A1 Rabbit Monoclonal Antibody
Catalog #: AMRe21239



Summary

Production Name	RBMY1A1 Rabbit Monoclonal Antibody
Description	Rabbit Monoclonal Antibody
Host	Rabbit
Application	WB,IHC
Reactivity	Human

Performance

Conjugation	Unconjugated
Modification	Unmodified
Isotype	IgG,Kappa
Clonality	Monoclonal
Form	Liquid
Storage	Store at 4°C short term. Aliquot and store at -20°C long term. Avoid freeze/thaw cycles.
Buffer	PBS, 50% glycerol, 0.05% Proclin 300, 0.05%BSA
Purification	Protein A

Immunogen

Gene Name	RBMY1A1;RBM1 RBMY1A1;RBM1;RBM2;YRRM1;YRRM2;RNA-binding motif protein, Y chromosome, family 1 member A1 ;RNA-binding motif protein 1;RNA-binding motif protein 2;Y chromosome RNA recognition motif 1;hRBMY;
Alternative Names	
Gene ID	5940.0
SwissProt ID	P0DJD3.

Application

Dilution Ratio	WB 1:1000-5000;IHC 1:100-300
Molecular Weight	Calculated MW;;Observed MW:55kD

Background

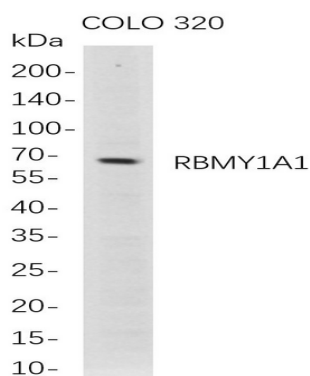
Product Name: RBMY1A1 Rabbit Monoclonal Antibody
Catalog #: AMRe21239



Cell localization:Nucleus..This gene encodes a protein containing an RNA-binding motif in the N-terminus and four SRGY (serine, arginine, glycine, tyrosine) boxes in the C-terminus. This protein is thought to function as a splicing regulator during spermatogenesis. Multiple closely related paralogs of this gene are found in a gene cluster in the AZFb azoospermia factor region of chromosome Y. Most of these related copies are thought to be pseudogenes, though several likely encode functional proteins. [provided by RefSeq, Mar 2016]

Research Area

Image Data



Western Blot analysis of COLO 320 whole cell lysates were separated by 4-20% SDS-PAGE, and the membrane was blotted with anti-RBMY1A1 rabbit mAb. The HRP-conjugated Goat anti-Rabbit IgG(H + L) antibody was used to detect the antibody.

Note

For research use only.