

Product Name: NBEAL2 Rabbit Monoclonal Antibody
Catalog #: AMRe21238



Summary

Production Name	NBEAL2 Rabbit Monoclonal Antibody
Description	Rabbit Monoclonal Antibody
Host	Rabbit
Application	WB
Reactivity	Human

Performance

Conjugation	Unconjugated
Modification	Unmodified
Isotype	IgG,Kappa
Clonality	Monoclonal
Form	Liquid
Storage	Store at 4°C short term. Aliquot and store at -20°C long term. Avoid freeze/thaw cycles.
Buffer	PBS, 50% glycerol, 0.05% Proclin 300, 0.05%BSA
Purification	Protein A

Immunogen

Gene Name	NBEAL2;KIAA0540
Alternative Names	NBEAL2;KIAA0540;UNQ253/PRO290;Neurobeachin-like protein 2;
Gene ID	23218.0
SwissProt ID	Q6ZNJ1.

Application

Dilution Ratio	WB 1:1000-5000
Molecular Weight	Calculated MW::Observed MW:303kD

Background

Cell localization:Endoplasmic reticulum..The protein encoded by this gene contains a beige and Chediak-Higashi (BEACH) domain and multiple WD40 domains, and may play a role in megakaryocyte alpha-granule biogenesis. Mutations in this

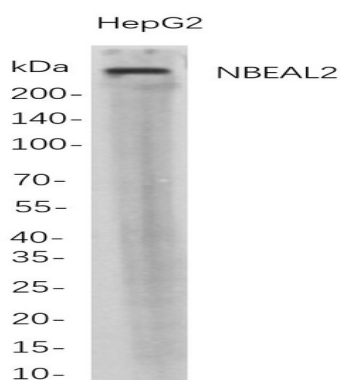
Product Name: NBEAL2 Rabbit Monoclonal Antibody
Catalog #: AMRe21238



gene are a cause of gray platelet syndrome. [provided by RefSeq, Dec 2011]

Research Area

Image Data



Western Blot analysis of HepG2 whole cell lysates were separated by 4-20% SDS-PAGE, and the membrane was blotted with anti-NBEAL2 rabbit mAb. The HRP-conjugated Goat anti-Rabbit IgG(H + L) antibody was used to detect the antibody.

Note

For research use only.