

Product Name: FAM111A Rabbit Monoclonal Antibody
Catalog #: AMRe21235



Summary

Production Name	FAM111A Rabbit Monoclonal Antibody
Description	Rabbit Monoclonal Antibody
Host	Rabbit
Application	WB,IHC,IF,ICC
Reactivity	Human

Performance

Conjugation	Unconjugated
Modification	Unmodified
Isotype	IgG,Kappa
Clonality	Monoclonal
Form	Liquid
Storage	Store at 4°C short term. Aliquot and store at -20°C long term. Avoid freeze/thaw cycles.
Buffer	PBS, 50% glycerol, 0.05% Proclin 300, 0.05%BSA
Purification	Protein A

Immunogen

Gene Name	FAM111A;KIAA1895
Alternative Names	FAM111A;KIAA1895;Serine protease FAM111A;
Gene ID	63901.0
SwissProt ID	Q96PZ2.

Application

Dilution Ratio	WB 1:1000-5000;IHC 1:100-300;ICC/IF 1:100-300
Molecular Weight	Calculated MW;;Observed MW:67kD

Background

Cell localization:Nucleus. Chromosome. Cytoplasm. Note=Mainly localizes to nucleus: colocalizes with PCNA on replication sites...The protein encoded by this gene is cell-cycle regulated, and has nuclear localization. The C-terminal half of the

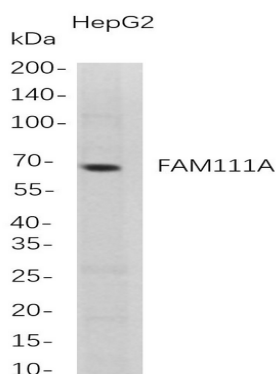
Product Name: FAM111A Rabbit Monoclonal Antibody
Catalog #: AMRe21235



protein shares homology with trypsin-like peptidases and it contains a PCNA-interacting peptide (PIP) box, that is necessary for its co-localization with proliferating cell nuclear antigen (PCNA). Reduced expression of this gene resulted in DNA replication defects, consistent with the demonstrated role for this gene in Simian Virus 40 (SV40) viral replication. Mutations in this gene have been associated with Kenny-Caffey syndrome (KCS) type 2 and the more severe osteocraniostenosis (OCS, also known as Gracile Bone Dysplasia), both characterized by short stature, hypoparathyroidism, bone development abnormalities, and hypocalcemia. Alternative splicing results in multiple transcript variants. [provided by RefSeq, Aug 2015],

Research Area

Image Data



Western Blot analysis of HepG2 whole cell lysates were separated by 4-20% SDS-PAGE, and the membrane was blotted with anti-FAM111A rabbit mAb. The HRP-conjugated Goat anti-Rabbit IgG(H + L) antibody was used to detect the antibody.

Note

For research use only.