

Product Name: BRAT1 Rabbit Monoclonal Antibody
Catalog #: AMRe21234



Summary

Production Name	BRAT1 Rabbit Monoclonal Antibody
Description	Rabbit Monoclonal Antibody
Host	Rabbit
Application	WB,IF,ICC,Flow Cyt,IP
Reactivity	Human

Performance

Conjugation	Unconjugated
Modification	Unmodified
Isotype	IgG,Kappa
Clonality	Monoclonal
Form	Liquid
Storage	Store at 4°C short term. Aliquot and store at -20°C long term. Avoid freeze/thaw cycles.
Buffer	PBS, 50% glycerol, 0.05% Proclin 300, 0.05%BSA
Purification	Protein A

Immunogen

Gene Name	BRAT1;BAAT1;C7orf27
Alternative Names	BRAT1;BAAT1;C7orf27;BRCA1-associated ATM activator 1 ;BRCA1-associated protein required for ATM activation protein 1;
Gene ID	221927.0
SwissProt ID	Q6PJG6.

Application

Dilution Ratio	WB 1:1000-5000;ICC/IF 1:100-300;FC 1:100-300;IP 1:50-100
Molecular Weight	Calculated MW;;Observed MW:90kD

Background

Cell localization:Nucleus. Cytoplasm. Note=Present at double strand breaks (DSBs)following ionizing radiation treatment.

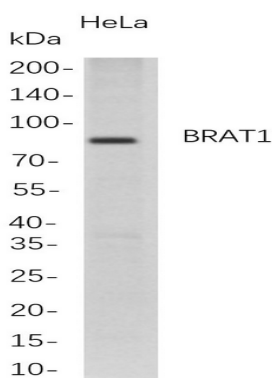
Product Name: BRAT1 Rabbit Monoclonal Antibody
Catalog #: AMRe21234



The ubiquitinated form localizes in the nucleus in a NDFIP1-dependent manner...The protein encoded by this ubiquitously expressed gene interacts with the tumor suppressing BRCA1 (breast cancer 1) protein and the ATM (ataxia telangiectasia mutated) protein. ATM is thought to be a master controller of cell cycle checkpoint signalling pathways that are required for cellular responses to DNA damage such as double-strand breaks that are induced by ionizing radiation and complexes with BRCA1 in the multi-protein complex BASC (BRCA1-associated genome surveillance complex). The protein encoded by this gene is thought to play a role in the DNA damage pathway regulated by BRCA1 and ATM. [provided by RefSeq, Mar 2012]

Research Area

Image Data



Western Blot analysis of HeLa whole cell lysates were separated by 4-20% SDS-PAGE, and the membrane was blotted with anti-BRAT1 rabbit mAb. The HRP-conjugated Goat anti-Rabbit IgG(H + L) antibody was used to detect the antibody.

Note

For research use only.