

Product Name: LYPD3 Rabbit Monoclonal Antibody
Catalog #: AMRe21232



Summary

Production Name	LYPD3 Rabbit Monoclonal Antibody
Description	Rabbit Monoclonal Antibody
Host	Rabbit
Application	WB,IHC,IP
Reactivity	Human

Performance

Conjugation	Unconjugated
Modification	Unmodified
Isotype	IgG,Kappa
Clonality	Monoclonal
Form	Liquid
Storage	Store at 4°C short term. Aliquot and store at -20°C long term. Avoid freeze/thaw cycles.
Buffer	PBS, 50% glycerol, 0.05% Proclin 300, 0.05%BSA
Purification	Protein A

Immunogen

Gene Name	LYPD3;C4.4A LYPD3;C4.4A;UNQ491/PRO1007;Ly6/PLAUR domain-containing protein 3 ;GPI- anchored metastasis-associated protein C4.4A homolog;Matrigel-induced gene C4 protein;MIG-C4;
Alternative Names	
Gene ID	27076.0
SwissProt ID	O95274.

Application

Dilution Ratio	WB 1:1000-5000;IHC 1:100-300;IP 1:50-100
Molecular Weight	Calculated MW;;Observed MW:38kD

Background

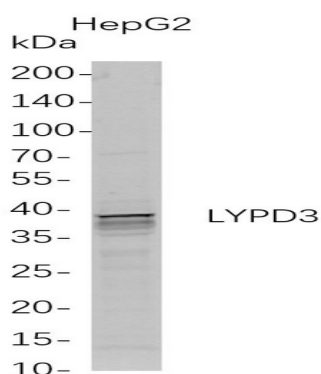
Product Name: LYPD3 Rabbit Monoclonal Antibody
Catalog #: AMRe21232



Cell localization: Cell membrane; Lipid-anchor, GPI-anchor..Predicted to enable laminin binding activity. Involved in negative regulation of smooth muscle cell apoptotic process. Located in extracellular space. [provided by Alliance of Genome Resources, Feb 2025]

Research Area

Image Data



Western Blot analysis of HepG2 whole cell lysates were separated by 4-20% SDS-PAGE, and the membrane was blotted with anti-LYPD3 rabbit mAb. The HRP-conjugated Goat anti-Rabbit IgG(H + L) antibody was used to detect the antibody.

Note

For research use only.