

Summary

Production Name	TSFM Rabbit Monoclonal Antibody
Description	Rabbit Monoclonal Antibody
Host	Rabbit
Application	WB,IF,ICC
Reactivity	Human

Performance

Conjugation	Unconjugated
Modification	Unmodified
Isotype	IgG,Kappa
Clonality	Monoclonal
Form	Liquid
Storage	Store at 4°C short term. Aliquot and store at -20°C long term. Avoid freeze/thaw cycles.
Buffer	PBS, 50% glycerol, 0.05% Proclin 300, 0.05%BSA
Purification	Protein A

Immunogen

Gene Name	TSFM
Alternative Names	TSFM;Elongation factor Ts, mitochondrial ;EF-Ts;EF-TsMt;
Gene ID	10102.0
SwissProt ID	P43897.

Application

Dilution Ratio	WB 1:1000-5000;ICC/IF 1:100-300
Molecular Weight	Calculated MW;;Observed MW:36kD

Background

Cell localization:Mitochondrion..This gene encodes a mitochondrial translation elongation factor. The encoded protein is an enzyme that catalyzes the exchange of guanine nucleotides on the translation elongation factor Tu during the elongation

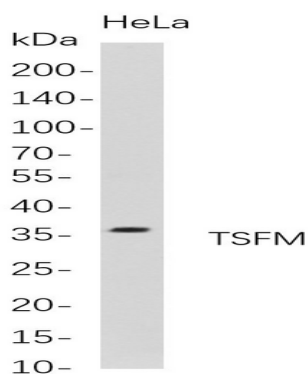
Product Name: TSFM Rabbit Monoclonal Antibody
Catalog #: AMRe21231



step of mitochondrial protein translation. Mutations in this gene are associated with combined oxidative phosphorylation deficiency-3 syndrome. Alternate splicing results in multiple transcript variants.[provided by RefSeq, Mar 2010]

Research Area

Image Data



Western Blot analysis of HeLa whole cell lysates were separated by 4-20% SDS-PAGE, and the membrane was blotted with anti-TSFM rabbit mAb. The HRP-conjugated Goat anti-Rabbit IgG(H + L) antibody was used to detect the antibody.

Note

For research use only.