

Summary

Production Name	SLFN12 Rabbit Monoclonal Antibody
Description	Rabbit Monoclonal Antibody
Host	Rabbit
Application	WB,Flow Cyt
Reactivity	Human

Performance

Conjugation	Unconjugated
Modification	Unmodified
Isotype	IgG,Kappa
Clonality	Monoclonal
Form	Liquid
Storage	Store at 4°C short term. Aliquot and store at -20°C long term. Avoid freeze/thaw cycles.
Buffer	PBS, 50% glycerol, 0.05% Proclin 300, 0.05%BSA
Purification	Protein A

Immunogen

Gene Name	SLFN12
Alternative Names	SLFN12;Ribonuclease SLFN12 ;Schlafen family member 12;
Gene ID	55106.0
SwissProt ID	Q8IYM2.

Application

Dilution Ratio	WB 1:1000-5000;FC 1:100-300
Molecular Weight	Calculated MW;;Observed MW:64kD

Background

Cell localization:Nucleus. Cytoplasm, cytosol..Enables RNA nuclease activity and ribosome binding activity. Involved in apoptotic signaling pathway and rRNA catabolic process. Part of cytosol and nucleus. [provided by Alliance of Genome

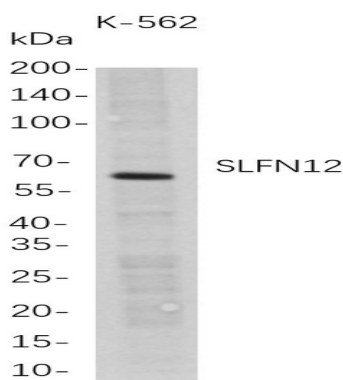
Product Name: SLFN12 Rabbit Monoclonal Antibody
Catalog #: AMRe21229



Resources, Feb 2025]

Research Area

Image Data



Western Blot analysis of K-562 whole cell lysates were separated by 4-20% SDS-PAGE, and the membrane was blotted with anti-SLFN12 rabbit mAb. The HRP-conjugated Goat anti-Rabbit IgG(H + L) antibody was used to detect the antibody.

Note

For research use only.