

Summary

Production Name	LRMP Rabbit Monoclonal Antibody
Description	Rabbit Monoclonal Antibody
Host	Rabbit
Application	WB,IHC,IF,ICC,Flow Cyt
Reactivity	Human

Performance

Conjugation	Unconjugated
Modification	Unmodified
Isotype	IgG,Kappa
Clonality	Monoclonal
Form	Liquid
Storage	Store at 4°C short term. Aliquot and store at -20°C long term. Avoid freeze/thaw cycles.
Buffer	PBS, 50% glycerol, 0.05% Proclin 300, 0.05%BSA
Purification	Protein A

Immunogen

Gene Name	IRAG2;JAW1;LRMP
Alternative Names	IRAG2;JAW1;LRMP;Inositol 1,4,5-triphosphate receptor associated 2 ;Lymphoid-restricted membrane protein;Protein Jaw1; [Cleaved into: Processed inositol 1,4,5-triphosphate receptor associated 2];
Gene ID	4033.0
SwissProt ID	Q12912.

Application

Dilution Ratio	WB 1:1000-5000;IHC 1:100-300;ICC/IF 1:100-300;FC 1:100-300
Molecular Weight	Calculated MW;;Observed MW:61kD

Background

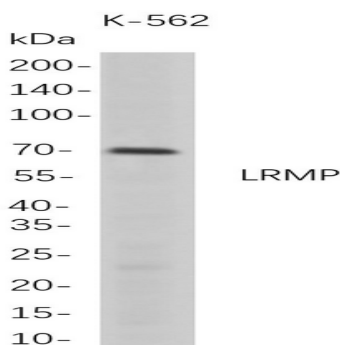
Product Name: LRMP Rabbit Monoclonal Antibody
Catalog #: AMRe21228



Cell localization:[Processed inositol 1,4,5-triphosphate receptor associated 2]: Cytoplasm.; Endoplasmic reticulum membrane; Single-pass type IV membrane protein. Nucleus envelope. Cytoplasm, cytoskeleton, microtubule organizing center, centrosome. Cytoplasm, cytoskeleton, spindle pole. Chromosome. Note=Colocalized with ITPR3 on the endoplasmic reticulum membrane...The protein encode dby this gene is expressed in a developmentally regulated manner in lymphoid cell lines and tissues. The protein is localized to the cytoplasmic face of the endoplasmic reticulum. [provided by RefSeq, Jul 2008]

Research Area

Image Data



Western Blot analysis of K-562 whole cell lysates were separated by 4-20% SDS-PAGE, and the membrane was blotted with anti-LRMP rabbit mAb. The HRP-conjugated Goat anti-Rabbit IgG(H + L) antibody was used to detect the antibody.

Note

For research use only.