

Summary

Production Name	KLHL6 Rabbit Monoclonal Antibody
Description	Rabbit Monoclonal Antibody
Host	Rabbit
Application	WB,IF,ICC,IP
Reactivity	Human

Performance

Conjugation	Unconjugated
Modification	Unmodified
Isotype	IgG,Kappa
Clonality	Monoclonal
Form	Liquid
Storage	Store at 4°C short term. Aliquot and store at -20°C long term. Avoid freeze/thaw cycles.
Buffer	PBS, 50% glycerol, 0.05% Proclin 300, 0.05%BSA
Purification	Protein A

Immunogen

Gene Name	KLHL6
Alternative Names	KLHL6;Kelch-like protein 6;
Gene ID	89857.0
SwissProt ID	Q8WZ60.

Application

Dilution Ratio	WB 1:1000-5000;ICC/IF 1:100-300;IP 1:50-100
Molecular Weight	Calculated MW;;Observed MW:68kD

Background

This gene encodes a member of the kelch-like (KLHL) family of proteins, which is involved in B-lymphocyte antigen receptor signaling and germinal-center B-cell maturation. The encoded protein contains an N-terminal broad-complex,

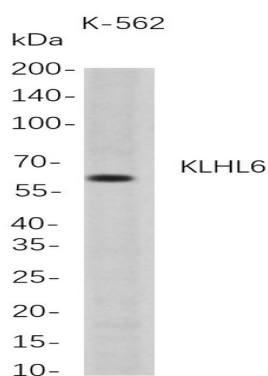
Product Name: KLHL6 Rabbit Monoclonal Antibody
Catalog #: AMRe21227



tramtrack and bric a brac (BTB) domain that facilitates protein binding and dimerization, a BTB and C-terminal kelch (BACK) domain, and six C-terminal kelch repeat domains. Naturally occurring mutations in this gene are associated with chronic lymphocytic leukemia. Alternative splicing results in multiple transcript variants. [provided by RefSeq, Feb 2017]

Research Area

Image Data



Western Blot analysis of K-562 whole cell lysates were separated by 4-20% SDS-PAGE, and the membrane was blotted with anti-KLHL6 rabbit mAb. The HRP-conjugated Goat anti-Rabbit IgG(H + L) antibody was used to detect the antibody.

Note

For research use only.