

Product Name: PTDSS2 Rabbit Monoclonal Antibody
Catalog #: AMRe21226



Summary

Production Name	PTDSS2 Rabbit Monoclonal Antibody
Description	Rabbit Monoclonal Antibody
Host	Rabbit
Application	WB,Flow Cyt,IP
Reactivity	Human

Performance

Conjugation	Unconjugated
Modification	Unmodified
Isotype	IgG,Kappa
Clonality	Monoclonal
Form	Liquid
Storage	Store at 4°C short term. Aliquot and store at -20°C long term. Avoid freeze/thaw cycles.
Buffer	PBS, 50% glycerol, 0.05% Proclin 300, 0.05%BSA
Purification	Protein A

Immunogen

Gene Name	PTDSS2;PSS2
Alternative Names	PTDSS2;PSS2;Phosphatidylserine synthase 2 ;PSS-2;PtdSer synthase 2;Serine-exchange enzyme II;
Gene ID	81490.0
SwissProt ID	Q9BVG9.

Application

Dilution Ratio	WB 1:1000-5000;FC 1:100-300;IP 1:50-100
Molecular Weight	Calculated MW;;Observed MW:54kD

Background

Cell localization:Endoplasmic reticulum membrane; Multi-pass membrane protein. Note=Highly enriched in the

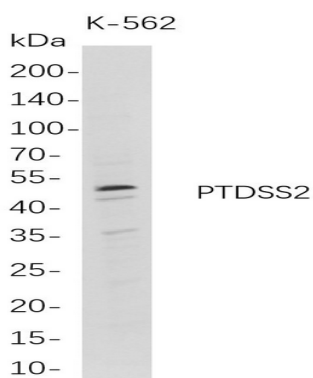
Product Name: PTDSS2 Rabbit Monoclonal Antibody
Catalog #: AMRe21226



mitochondria-associated membrane (MAM)...The protein encoded by this gene catalyzes the conversion of phosphatidylethanolamine to phosphatidylserine, a structural membrane phospholipid that functions in cell signaling, blood coagulation, and apoptosis. The encoded enzyme also has a high affinity for docosahexaenoic acid (DHA) and can use it to make DHA-containing phosphatidylserine. [provided by RefSeq, Jul 2016]

Research Area

Image Data



Western Blot analysis of K-562 whole cell lysates were separated by 4-20% SDS-PAGE, and the membrane was blotted with anti-PTDSS2 rabbit mAb. The HRP-conjugated Goat anti-Rabbit IgG(H + L) antibody was used to detect the antibody.

Note

For research use only.