

Product Name: PACSIN3 Rabbit Monoclonal Antibody
Catalog #: AMRe21225



Summary

Production Name	PACSIN3 Rabbit Monoclonal Antibody
Description	Rabbit Monoclonal Antibody
Host	Rabbit
Application	WB,IHC,IF,ICC,Flow Cyt,IP
Reactivity	Human

Performance

Conjugation	Unconjugated
Modification	Unmodified
Isotype	IgG,Kappa
Clonality	Monoclonal
Form	Liquid
Storage	Store at 4°C short term. Aliquot and store at -20°C long term. Avoid freeze/thaw cycles.
Buffer	PBS, 50% glycerol, 0.05% Proclin 300, 0.05%BSA
Purification	Protein A

Immunogen

Gene Name	PACSIN3
Alternative Names	PACSIN3;Protein kinase C and casein kinase substrate in neurons protein 3 ;SH3 domain-containing protein 6511;
Gene ID	29763.0
SwissProt ID	Q9UKS6.

Application

Dilution Ratio	WB 1:1000-5000;IHC 1:100-300;ICC/IF 1:100-300;FC 1:100-300;IP 1:50-100
Molecular Weight	Calculated MW;;Observed MW:47kD

Background

Cell localization:Cytoplasm. Cell membrane; Peripheral membrane protein; Cytoplasmic side. Note=Detected at the inner

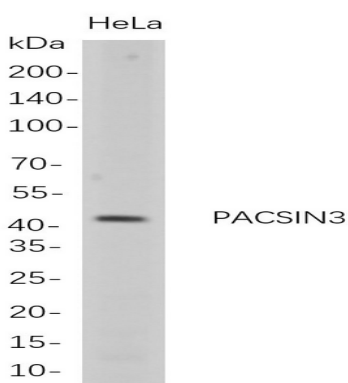
Product Name: PACSIN3 Rabbit Monoclonal Antibody
Catalog #: AMRe21225



aspect of the plasma membrane in myotubes...This gene is a member of the protein kinase C and casein kinase substrate in neurons family. The encoded protein is involved in linking the actin cytoskeleton with vesicle formation. Alternative splicing results in multiple transcript variants. [provided by RefSeq, May 2010]

Research Area

Image Data



Western Blot analysis of HeLa whole cell lysates were separated by 4-20% SDS-PAGE, and the membrane was blotted with anti-PACSIN3 rabbit mAb. The HRP-conjugated Goat anti-Rabbit IgG(H + L) antibody was used to detect the antibody.

Note

For research use only.