

**Product Name: POC5 Rabbit Monoclonal Antibody**  
**Catalog #: AMRe21224**



## Summary

<b>Production Name</b>	POC5 Rabbit Monoclonal Antibody
<b>Description</b>	Rabbit Monoclonal Antibody
<b>Host</b>	Rabbit
<b>Application</b>	WB,IHC
<b>Reactivity</b>	Human

## Performance

<b>Conjugation</b>	Unconjugated
<b>Modification</b>	Unmodified
<b>Isotype</b>	IgG,Kappa
<b>Clonality</b>	Monoclonal
<b>Form</b>	Liquid
<b>Storage</b>	Store at 4°C short term. Aliquot and store at -20°C long term. Avoid freeze/thaw cycles.
<b>Buffer</b>	PBS, 50% glycerol, 0.05% Proclin 300, 0.05%BSA
<b>Purification</b>	Protein A

## Immunogen

<b>Gene Name</b>	POC5;C5orf37
<b>Alternative Names</b>	POC5;C5orf37;Centrosomal protein POC5 ;Protein of centriole 5;hPOC5;
<b>Gene ID</b>	134359.0
<b>SwissProt ID</b>	Q8NA72.

## Application

<b>Dilution Ratio</b>	WB 1:1000-5000;IHC 1:100-300
<b>Molecular Weight</b>	Calculated MW;;Observed MW:63kD

## Background

Cell localization:Cytoplasm, cytoskeleton, microtubule organizing center, centrosome. Cytoplasm, cytoskeleton, microtubule organizing center, centrosome, centriole. Note=Localized to the distal portion of centrioles..Predicted to be involved in eye

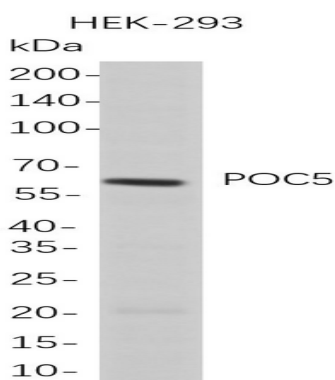
**Product Name: POC5 Rabbit Monoclonal Antibody**  
**Catalog #: AMRe21224**



photoreceptor cell development. Located in centrosome; cytosol; and nucleoplasm. [provided by Alliance of Genome Resources, Feb 2025]

## Research Area

## Image Data



Western Blot analysis of HEK-293 whole cell lysates were separated by 4-20% SDS-PAGE, and the membrane was blotted with anti-POC5 rabbit mAb. The HRP-conjugated Goat anti-Rabbit IgG(H + L) antibody was used to detect the antibody.

## Note

For research use only.