

Product Name: KCTD9 Rabbit Monoclonal Antibody
Catalog #: AMRe21218



Summary

Production Name	KCTD9 Rabbit Monoclonal Antibody
Description	Rabbit Monoclonal Antibody
Host	Rabbit
Application	WB,IF,ICC
Reactivity	Human

Performance

Conjugation	Unconjugated
Modification	Unmodified
Isotype	IgG,Kappa
Clonality	Monoclonal
Form	Liquid
Storage	Store at 4°C short term. Aliquot and store at -20°C long term. Avoid freeze/thaw cycles.
Buffer	PBS, 50% glycerol, 0.05% Proclin 300, 0.05%BSA
Purification	Protein A

Immunogen

Gene Name	KCTD9
Alternative Names	KCTD9;BTB/POZ domain-containing protein KCTD9;
Gene ID	54793.0
SwissProt ID	Q7L273.

Application

Dilution Ratio	WB 1:1000-5000;ICC/IF 1:100-300
Molecular Weight	Calculated MW;;Observed MW:43kD

Background

Enables cullin family protein binding activity and identical protein binding activity. Predicted to be involved in intracellular signal transduction; protein homooligomerization; and protein ubiquitination. [provided by Alliance of Genome Resources,

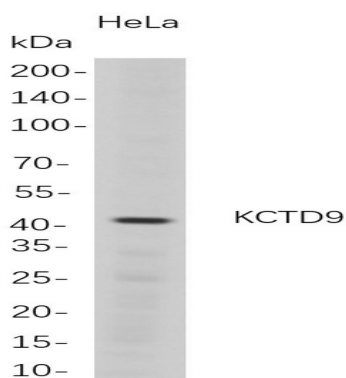
Product Name: KCTD9 Rabbit Monoclonal Antibody
Catalog #: AMRe21218



Feb 2025]

Research Area

Image Data



Western Blot analysis of HeLa whole cell lysates were separated by 4-20% SDS-PAGE, and the membrane was blotted with anti-KCTD9 rabbit mAb. The HRP-conjugated Goat anti-Rabbit IgG(H + L) antibody was used to detect the antibody.

Note

For research use only.