

Summary

Production Name	BTNL3 Rabbit Monoclonal Antibody
Description	Rabbit Monoclonal Antibody
Host	Rabbit
Application	WB,Flow Cyt
Reactivity	Human

Performance

Conjugation	Unconjugated
Modification	Unmodified
Isotype	IgG,Kappa
Clonality	Monoclonal
Form	Liquid
Storage	Store at 4°C short term. Aliquot and store at -20°C long term. Avoid freeze/thaw cycles.
Buffer	PBS, 50% glycerol, 0.05% Proclin 300, 0.05%BSA
Purification	Protein A

Immunogen

Gene Name	BTNL3;BTNLR
Alternative Names	BTNL3;BTNLR;COLF4100;UNQ744/PRO1472;Butyrophilin-like protein 3 ;Butyrophilin-like receptor;
Gene ID	10917.0
SwissProt ID	Q6UXE8.

Application

Dilution Ratio	WB 1:1000-5000;FC 1:100-300
Molecular Weight	Calculated MW;;Observed MW:51kD

Background

Cell localization:Membrane; Single-pass type I membrane protein..Predicted to enable signaling receptor binding activity.

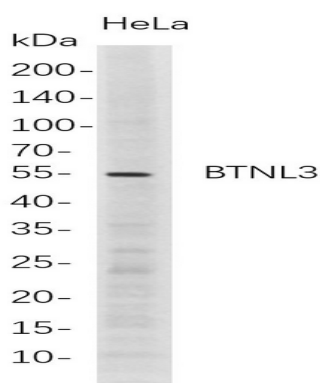
Product Name: BTNL3 Rabbit Monoclonal Antibody
Catalog #: AMRe21217



Predicted to be involved in T cell receptor signaling pathway and regulation of cytokine production. Predicted to be located in membrane. Predicted to be active in external side of plasma membrane. [provided by Alliance of Genome Resources, Feb 2025]

Research Area

Image Data



Western Blot analysis of HeLa whole cell lysates were separated by 4-20% SDS-PAGE, and the membrane was blotted with anti-BTNL3 rabbit mAb. The HRP-conjugated Goat anti-Rabbit IgG(H + L) antibody was used to detect the antibody.

Note

For research use only.