

## Summary

<b>Production Name</b>	GCET2 Rabbit Monoclonal Antibody
<b>Description</b>	Rabbit Monoclonal antibody
<b>Host</b>	Rabbit
<b>Application</b>	IHC,IF,ICC,Flow Cyt
<b>Reactivity</b>	Human

## Performance

<b>Conjugation</b>	Unconjugated
<b>Modification</b>	Unmodified
<b>Isotype</b>	IgG,Kappa
<b>Clonality</b>	Monoclonal
<b>Form</b>	Liquid
<b>Storage</b>	Store at 4°C short term. Aliquot and store at -20°C long term. Avoid freeze/thaw cycles.
<b>Buffer</b>	PBS, 50% glycerol, 0.05% Proclin 300, 0.05%BSA
<b>Purification</b>	Protein A

## Immunogen

<b>Gene Name</b>	GCSAM
<b>Alternative Names</b>	GCSAM;GAL;GCET2;Germinal center-associated signaling and motility protein ;Germinal center B-cell-expressed transcript 2 protein;Germinal center-associated lymphoma protein;hGAL;
<b>Gene ID</b>	257144.0
<b>SwissProt ID</b>	Q8N6F7.

## Application

<b>Dilution Ratio</b>	IHC 1:100-300;ICC/IF 1:100-300;FC 1:100-300
<b>Molecular Weight</b>	Calculated MW;;Observed MW:20kD

## Background

**Product Name: GCET2 Rabbit Monoclonal Antibody**  
**Catalog #: AMRe21212**

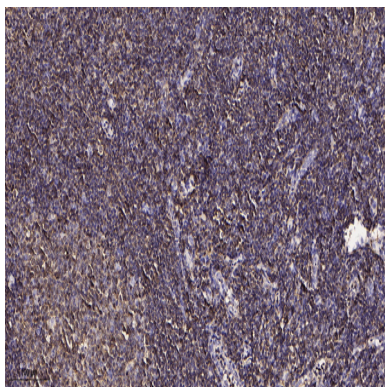
---



Cell localization: Cytoplasm. Cell membrane. Note=It relocalizes from the cytoplasm to podosome-like structures upon cell treatment with IL6..This gene encodes a protein which may function in signal transduction pathways and whose expression is elevated in germinal cell lymphomas. It contains a putative PDZ-interacting domain, an immunoreceptor tyrosine-based activation motif (ITAM), and two putative SH2 binding sites. In B cells, its expression is specifically induced by interleukin-4. Alternative splicing results in multiple transcript variants encoding different isoforms. [provided by RefSeq, Jul 2008]

## Research Area

## Image Data



Immunohistochemical analysis of paraffin-embedded human tonsil tissue. 1, primary Antibody was diluted at 1:200 (4°C, overnight). 2, EDTA pH 9.0 was used for antibody retrieval (>98°C, 20min). 3, Secondary antibody was diluted at 1:200 (room temperature, 30min).

## Note

For research use only.