

**Product Name: RBM43 Rabbit Monoclonal Antibody**  
**Catalog #: AMRe21208**



## Summary

<b>Production Name</b>	RBM43 Rabbit Monoclonal Antibody
<b>Description</b>	Rabbit Monoclonal Antibody
<b>Host</b>	Rabbit
<b>Application</b>	WB
<b>Reactivity</b>	Human

## Performance

<b>Conjugation</b>	Unconjugated
<b>Modification</b>	Unmodified
<b>Isotype</b>	IgG,Kappa
<b>Clonality</b>	Monoclonal
<b>Form</b>	Liquid
<b>Storage</b>	Store at 4°C short term. Aliquot and store at -20°C long term. Avoid freeze/thaw cycles.
<b>Buffer</b>	PBS, 50% glycerol, 0.05% Proclin 300, 0.05%BSA
<b>Purification</b>	Protein A

## Immunogen

<b>Gene Name</b>	RBM43;C2orf38
<b>Alternative Names</b>	RBM43;C2orf38;RNA-binding protein 43 ;RNA-binding motif protein 43;
<b>Gene ID</b>	375287.0
<b>SwissProt ID</b>	Q6ZSC3.

## Application

<b>Dilution Ratio</b>	WB 1:1000-5000
<b>Molecular Weight</b>	Calculated MW;;Observed MW:39kD

## Background

Predicted to enable RNA binding activity. [provided by Alliance of Genome Resources, Feb 2025]

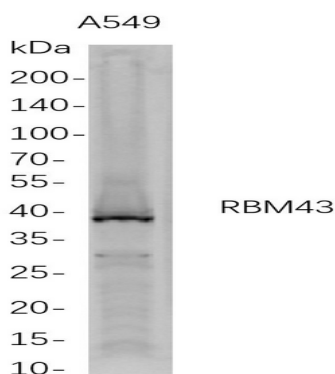
**Product Name: RBM43 Rabbit Monoclonal Antibody**  
**Catalog #: AMRe21208**



---

## Research Area

## Image Data



Western Blot analysis of A549 whole cell lysates were separated by 4-20% SDS-PAGE, and the membrane was blotted with anti-RBM43 rabbit mAb. The HRP-conjugated Goat anti-Rabbit IgG(H + L) antibody was used to detect the antibody.

## Note

For research use only.