

Product Name: C2orf69 Rabbit Monoclonal Antibody
Catalog #: AMRe21205



Summary

Production Name	C2orf69 Rabbit Monoclonal Antibody
Description	Rabbit Monoclonal Antibody
Host	Rabbit
Application	WB
Reactivity	Human

Performance

Conjugation	Unconjugated
Modification	Unmodified
Isotype	IgG,Kappa
Clonality	Monoclonal
Form	Liquid
Storage	Store at 4°C short term. Aliquot and store at -20°C long term. Avoid freeze/thaw cycles.
Buffer	PBS, 50% glycerol, 0.05% Proclin 300, 0.05%BSA
Purification	Protein A

Immunogen

Gene Name	C2orf69
Alternative Names	C2orf69;Mitochondrial protein C2orf69;
Gene ID	205327.0
SwissProt ID	Q8N8R5.

Application

Dilution Ratio	WB 1:1000-5000
Molecular Weight	Calculated MW;;Observed MW:42kD

Background

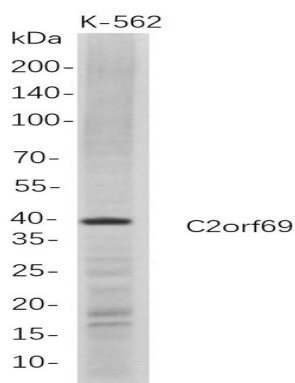
Cell localization:Mitochondrion matrix..Involved in oxidative phosphorylation. Located in mitochondrion. Implicated in combined oxidative phosphorylation deficiency 53. [provided by Alliance of Genome Resources, Feb 2025]

Product Name: C2orf69 Rabbit Monoclonal Antibody
Catalog #: AMRe21205



Research Area

Image Data



Western Blot analysis of K-562 whole cell lysates were separated by 4-20% SDS-PAGE, and the membrane was blotted with anti-C2orf69 rabbit mAb. The HRP-conjugated Goat anti-Rabbit IgG(H + L) antibody was used to detect the antibody.

Note

For research use only.