

Summary

Production Name	CD89 Rabbit Monoclonal Antibody
Description	Rabbit Monoclonal Antibody
Host	Rabbit
Application	WB,IHC,IF,ICC,Flow Cyt,IP
Reactivity	Human

Performance

Conjugation	Unconjugated
Modification	Unmodified
Isotype	IgG,Kappa
Clonality	Monoclonal
Form	Liquid
Storage	Store at 4°C short term. Aliquot and store at -20°C long term. Avoid freeze/thaw cycles.
Buffer	PBS, 50% glycerol, 0.05% Proclin 300, 0.05%BSA
Purification	Protein A

Immunogen

Gene Name	FCAR;CD89
Alternative Names	FCAR;CD89;Immunoglobulin alpha Fc receptor ;IgA Fc receptor;CD antigen CD89;
Gene ID	2204.0
SwissProt ID	P24071.

Application

Dilution Ratio	WB 1:1000-5000;IHC 1:100-300;ICC/IF 1:100-300;FC 1:100-300;IP 1:50-100
Molecular Weight	Calculated MW;;Observed MW:32kD

Background

Cell localization:[Isoform A.1]: Cell membrane; Single-pass type I membrane protein.; [Isoform A.2]: Cell membrane; Single-pass type I membrane protein.; [Isoform A.3]: Cell membrane; Single-pass type I membrane protein.; [Isoform B]: Secreted.;

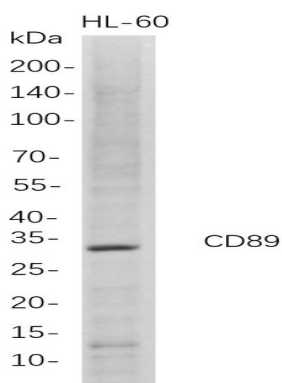
Product Name: CD89 Rabbit Monoclonal Antibody
Catalog #: AMRe21201



[Isoform B-delta-S2]: Secreted..This gene is a member of the immunoglobulin gene superfamily and encodes a receptor for the Fc region of IgA. The receptor is a transmembrane glycoprotein present on the surface of myeloid lineage cells such as neutrophils, monocytes, macrophages, and eosinophils, where it mediates immunologic responses to pathogens. It interacts with IgA-opsonized targets and triggers several immunologic defense processes, including phagocytosis, antibody-dependent cell-mediated cytotoxicity, and stimulation of the release of inflammatory mediators. Multiple alternatively spliced transcript variants encoding different isoforms have been described for this gene. [provided by RefSeq, Jul 2008],

Research Area

Image Data



Western Blot analysis of HL-60 whole cell lysates were separated by 4-20% SDS-PAGE, and the membrane was blotted with anti-CD89 rabbit mAb. The HRP-conjugated Goat anti-Rabbit IgG(H + L) antibody was used to detect the antibody.

Note

For research use only.