

Product Name: SPAM1 Rabbit Monoclonal Antibody
Catalog #: AMRe21199



Summary

Production Name	SPAM1 Rabbit Monoclonal Antibody
Description	Rabbit Monoclonal Antibody
Host	Rabbit
Application	WB,IHC
Reactivity	Human

Performance

Conjugation	Unconjugated
Modification	Unmodified
Isotype	IgG,Kappa
Clonality	Monoclonal
Form	Liquid
Storage	Store at 4°C short term. Aliquot and store at -20°C long term. Avoid freeze/thaw cycles.
Buffer	PBS, 50% glycerol, 0.05% Proclin 300, 0.05%BSA
Purification	Protein A

Immunogen

Gene Name	SPAM1;HYAL3;PH20
Alternative Names	SPAM1;HYAL3;PH20;Hyaluronidase PH-20 ;Hyal-PH20;Hyaluronoglucosaminidase PH-20;Sperm adhesion molecule 1;Sperm surface protein PH-20;
Gene ID	6677.0
SwissProt ID	P38567.

Application

Dilution Ratio	WB 1:1000-5000;IHC 1:100-300
Molecular Weight	Calculated MW;;Observed MW:56kD

Background

Cell localization:Cell membrane; Lipid-anchor, GPI-anchor..Hyaluronidase degrades hyaluronic acid, a major structural

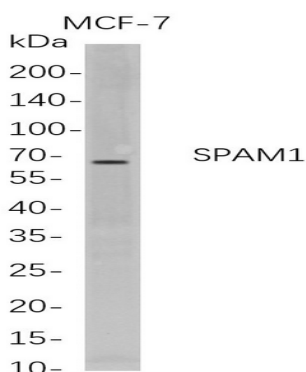
Product Name: SPAM1 Rabbit Monoclonal Antibody
Catalog #: AMRe21199



proteoglycan found in extracellular matrices and basement membranes. Six members of the hyaluronidase family are clustered into two tightly linked groups on chromosome 3p21.3 and 7q31.3. This gene was previously referred to as HYAL1 and HYA1 and has since been assigned the official symbol SPAM1; another family member on chromosome 3p21.3 has been assigned HYAL1. This gene encodes a GPI-anchored enzyme located on the human sperm surface and inner acrosomal membrane. This multifunctional protein is a hyaluronidase that enables sperm to penetrate through the hyaluronic acid-rich cumulus cell layer surrounding the oocyte, a receptor that plays a role in hyaluronic acid induced cell signaling, and a receptor that is involved in sperm-zona pellucida adhesion. Abnormal expression of this gene in tumors has implicated this protein in degradation of basement membranes leading to tumor invasion and metastasis. Multiple transcript variants encoding different isoforms have been found for this gene. [provided by RefSeq, Mar 2010]

Research Area

Image Data



Western Blot analysis of MCF-7 whole cell lysates were separated by 4-20% SDS-PAGE, and the membrane was blotted with anti-SPAM1 rabbit mAb. The HRP-conjugated Goat anti-Rabbit IgG(H + L) antibody was used to detect the antibody.

Note

For research use only.