

**Product Name: IKB epsilon Rabbit Monoclonal Antibody**  
**Catalog #: AMRe21197**



## Summary

<b>Production Name</b>	IKB epsilon Rabbit Monoclonal Antibody
<b>Description</b>	Rabbit Monoclonal Antibody
<b>Host</b>	Rabbit
<b>Application</b>	WB,IHC,IF,ICC,IP
<b>Reactivity</b>	Human

## Performance

<b>Conjugation</b>	Unconjugated
<b>Modification</b>	Unmodified
<b>Isotype</b>	IgG,Kappa
<b>Clonality</b>	Monoclonal
<b>Form</b>	Liquid
<b>Storage</b>	Store at 4°C short term. Aliquot and store at -20°C long term. Avoid freeze/thaw cycles.
<b>Buffer</b>	PBS, 50% glycerol, 0.05% Proclin 300, 0.05%BSA
<b>Purification</b>	Protein A

## Immunogen

<b>Gene Name</b>	NFKBIE;IKBE
<b>Alternative Names</b>	NFKBIE;IKBE;NF-kappa-B inhibitor epsilon ;NF-kappa-BIE;l-kappa-B-epsilon;Ikb-E;Ikb-epsilon;IkappaBepsilon;
<b>Gene ID</b>	4794.0
<b>SwissProt ID</b>	O00221.

## Application

<b>Dilution Ratio</b>	WB 1:1000-5000;IHC 1:100-300;ICC/IF 1:100-300;IP 1:50-100
<b>Molecular Weight</b>	Calculated MW;;Observed MW:55kD

## Background

Cell localization:Cytoplasm..The protein encoded by this gene binds to components of NF-kappa-B, trapping the complex

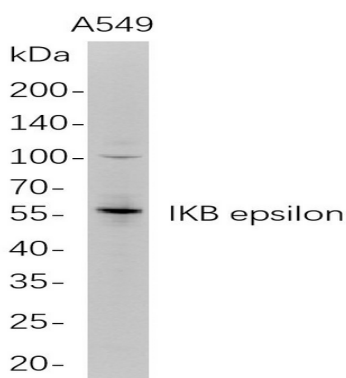
**Product Name: IKB epsilon Rabbit Monoclonal Antibody**  
**Catalog #: AMRe21197**



in the cytoplasm and preventing it from activating genes in the nucleus. Phosphorylation of the encoded protein targets it for destruction by the ubiquitin pathway, which activates NF-kappa-B by making it available to translocate to the nucleus. [provided by RefSeq, Sep 2011],

## Research Area

## Image Data



Western Blot analysis of A549 whole cell lysates were separated by 4-20% SDS-PAGE, and the membrane was blotted with anti-IKB epsilon rabbit mAb. The HRP-conjugated Goat anti-Rabbit IgG(H + L) antibody was used to detect the antibody.

## Note

For research use only.