

**Product Name:  $\beta$  Catenin (Phospho Thr41/Ser45) Rabbit Monoclonal Antibody**  
**Catalog #: AMRe21193**

---

## Summary

<b>Production Name</b>	$\beta$ Catenin (Phospho Thr41/Ser45) Rabbit Monoclonal Antibody
<b>Description</b>	Rabbit Monoclonal Antibody
<b>Host</b>	Rabbit
<b>Application</b>	WB,IF,IP,ELISA
<b>Reactivity</b>	Human,Mouse,Rat

## Performance

<b>Conjugation</b>	Phospho
<b>Modification</b>	Phosphorylated
<b>Isotype</b>	IgG,Kappa
<b>Clonality</b>	Monoclonal
<b>Form</b>	Liquid
<b>Storage</b>	Store at 4°C short term. Aliquot and store at -20°C long term. Avoid freeze/thaw cycles.
<b>Buffer</b>	PBS, 50% glycerol, 0.05% Proclin 300, 0.05%BSA
<b>Purification</b>	Protein A

## Immunogen

<b>Gene Name</b>	CTNNB1
<b>Alternative Names</b>	CTNNB1;CTNNB;OK/SW-cl.35;Catenin beta-1;Beta-catenin
<b>Gene ID</b>	1499.0
<b>SwissProt ID</b>	P35222.

## Application

<b>Dilution Ratio</b>	WB 1:2000-1:10000;IF 1:200-1:1000;ELISA 1:5000-1:20000;IP 1:50-1:200;
<b>Molecular Weight</b>	Calculated MW:86kD;Observed MW:92kD

## Background

Cell localization:Membrane, Cytoplasm.The protein encoded by this gene is part of a complex of proteins that constitute

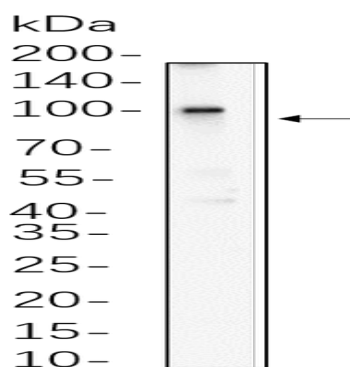
**Product Name:  $\beta$  Catenin (Phospho Thr41/Ser45) Rabbit  
Monoclonal Antibody  
Catalog #: AMRe21193**

---

adherens junctions (AJs). AJs are necessary for the creation and maintenance of epithelial cell layers by regulating cell growth and adhesion between cells. The encoded protein also anchors the actin cytoskeleton and may be responsible for transmitting the contact inhibition signal that causes cells to stop dividing once the epithelial sheet is complete. Finally, this protein binds to the product of the APC gene, which is mutated in adenomatous polyposis of the colon. Mutations in this gene are a cause of colorectal cancer (CRC), pilomatrixoma (PTR), medulloblastoma (MDB), and ovarian cancer. Alternative splicing results in multiple transcript variants. [provided by RefSeq, Aug 2016],

## Research Area

## Image Data



SW620 whole cell lysates were separated by 10% SDS-PAGE, and the membrane was blotted with primary antibody(1:1000).  
The HRP-conjugated Goat anti-Rabbit IgG(H + L) antibody was used to detect the antibody.

## Note

For research use only.