

Product Name: LRP6 Rabbit Monoclonal Antibody
Catalog #: AMRe21175



Summary

| | |
|------------------------|---------------------------------|
| Production Name | LRP6 Rabbit Monoclonal Antibody |
| Description | Rabbit Monoclonal Antibody |
| Host | Rabbit |
| Application | WB,IHC,IF,IP,ELISA |
| Reactivity | Human,Mouse |

Performance

| | |
|---------------------|--|
| Conjugation | Unconjugated |
| Modification | Unmodified |
| Isotype | IgG,Kappa |
| Clonality | Monoclonal |
| Form | Liquid |
| Storage | Store at 4°C short term. Aliquot and store at -20°C long term. Avoid freeze/thaw cycles. |
| Buffer | PBS, 50% glycerol, 0.05% Proclin 300, 0.05%BSA |
| Purification | Protein A |

Immunogen

| | |
|--------------------------|---------|
| Gene Name | LRP6 |
| Alternative Names | |
| Gene ID | 4040.0 |
| SwissProt ID | O75581. |

Application

| | |
|-------------------------|--|
| Dilution Ratio | IHC 1:200-1:1000;WB 1:2000-1:10000;IF 1:200-1:1000;ELISA 1:5000-1:20000;IP 1:50-1:200; |
| Molecular Weight | Calculated MW:180kD;Observed MW:210kD |

Background

Cell localization:Membrane.This gene encodes a member of the low density lipoprotein (LDL) receptor gene family. LDL

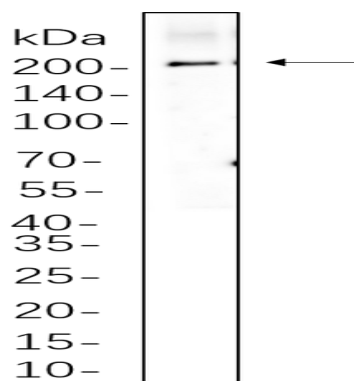
Product Name: LRP6 Rabbit Monoclonal Antibody
Catalog #: AMRe21175



receptors are transmembrane cell surface proteins involved in receptor-mediated endocytosis of lipoprotein and protein ligands. The protein encoded by this gene functions as a receptor or, with Frizzled, a co-receptor for Wnt and thereby transmits the canonical Wnt/beta-catenin signaling cascade. Through its interaction with the Wnt/beta-catenin signaling cascade this gene plays a role in the regulation of cell differentiation, proliferation, and migration and the development of many cancer types. This protein undergoes gamma-secretase dependent RIP- (regulated intramembrane proteolysis) processing but the precise locations of the cleavage sites have not been determined.[provided by RefSeq, Dec 2009],

Research Area

Image Data



Hela whole cell lysates were separated by 10% SDS-PAGE, and the membrane was blotted with primary antibody(1:1000).
The HRP-conjugated Goat anti-Rabbit IgG(H + L) antibody was used to detect the antibody.

Note

For research use only.