

Product Name: MDM2 Rabbit Monoclonal Antibody
Catalog #: AMRe21162



Summary

Production Name	MDM2 Rabbit Monoclonal Antibody
Description	Rabbit Monoclonal Antibody
Host	Rabbit
Application	WB,IHC,IF,IP,ELISA
Reactivity	Human,Mouse,Rat

Performance

Conjugation	Unconjugated
Modification	Unmodified
Isotype	IgG,Kappa
Clonality	Monoclonal
Form	Liquid
Storage	Store at 4°C short term. Aliquot and store at -20°C long term. Avoid freeze/thaw cycles.
Buffer	PBS, 50% glycerol, 0.05% Proclin 300, 0.05%BSA
Purification	Protein A

Immunogen

Gene Name	MDM2
Alternative Names	MDM2;E3 ubiquitin-protein ligase Mdm2;Double minute 2 protein;Hdm2;Oncoprotein Mdm2;p53-binding protein Mdm2
Gene ID	4193.0
SwissProt ID	Q00987.

Application

Dilution Ratio	IHC 1:200-1:1000;WB 1:2000-1:10000;IF 1:200-1:1000;ELISA 1:5000-1:20000;IP 1:50-1:200;
Molecular Weight	Calculated MW:55kD;Observed MW:90kD

Background

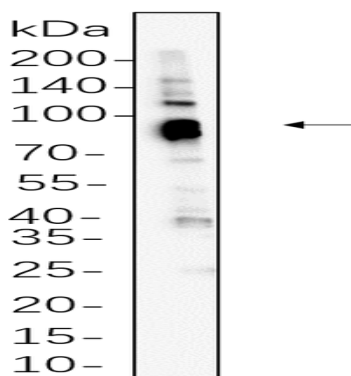
Product Name: MDM2 Rabbit Monoclonal Antibody
Catalog #: AMRe21162



Cell localization: Cytoplasm, Nucleus. This gene encodes a nuclear-localized E3 ubiquitin ligase. The encoded protein can promote tumor formation by targeting tumor suppressor proteins, such as p53, for proteasomal degradation. This gene is itself transcriptionally-regulated by p53. Overexpression or amplification of this locus is detected in a variety of different cancers. There is a pseudogene for this gene on chromosome 2. Alternative splicing results in a multitude of transcript variants, many of which may be expressed only in tumor cells. [provided by RefSeq, Jun 2013],

Research Area

Image Data



A431 whole cell lysates were separated by 10% SDS-PAGE, and the membrane was blotted with primary antibody (1:1000).
The HRP-conjugated Goat anti-Rabbit IgG(H + L) antibody was used to detect the antibody.

Note

For research use only.