

Product Name: IFT88 Rabbit Monoclonal Antibody
Catalog #: AMRe21161



Summary

Production Name	IFT88 Rabbit Monoclonal Antibody
Description	Rabbit Monoclonal Antibody
Host	Rabbit
Application	WB,IF,IP,ELISA
Reactivity	Human,Mouse,Rat

Performance

Conjugation	Unconjugated
Modification	Unmodified
Isotype	IgG,Kappa
Clonality	Monoclonal
Form	Liquid
Storage	Store at 4°C short term. Aliquot and store at -20°C long term. Avoid freeze/thaw cycles.
Buffer	PBS, 50% glycerol, 0.05% Proclin 300, 0.05%BSA
Purification	Protein A

Immunogen

Gene Name	IFT88
Alternative Names	TG737 TTC10
Gene ID	8100.0
SwissProt ID	Q13099.

Application

Dilution Ratio	WB 1:2000-1:10000;IF 1:200-1:1000;ELISA 1:5000-1:20000;IP 1:50-1:200;
Molecular Weight	Calculated MW:94kD;Observed MW:94kD

Background

Cell localization:Cytoplasm.This gene encodes a member of the tetratrico peptide repeat (TPR) family. The encoded protein is involved in cilium biogenesis. Mutations of a similar gene in mouse can cause polycystic kidney disease. Several transcript

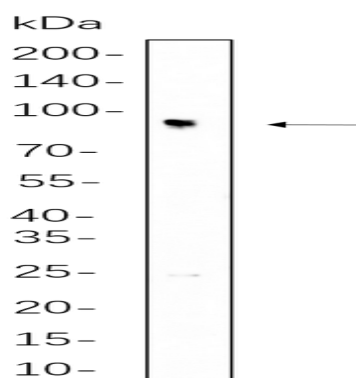
Product Name: IFT88 Rabbit Monoclonal Antibody
Catalog #: AMRe21161



variants encoding distinct isoforms have been identified for this gene. [provided by RefSeq, Jul 2017]

Research Area

Image Data



Mouse kidney cell lysates were separated by 4-20% SDS-PAGE, and the membrane was blotted with primary antibody 1:1000. The HRP-conjugated Goat anti-Rabbit IgG(H + L) antibody was used to detect the antibody.

Note

For research use only.