

**Product Name: Smad5 Rabbit Monoclonal Antibody**  
**Catalog #: AMRe21160**



## Summary

<b>Production Name</b>	Smad5 Rabbit Monoclonal Antibody
<b>Description</b>	Rabbit Monoclonal Antibody
<b>Host</b>	Rabbit
<b>Application</b>	WB,IHC,IF,IP,ELISA
<b>Reactivity</b>	Human,Mouse,Rat

## Performance

<b>Conjugation</b>	Unconjugated
<b>Modification</b>	Unmodified
<b>Isotype</b>	IgG,Kappa
<b>Clonality</b>	Monoclonal
<b>Form</b>	Liquid
<b>Storage</b>	Store at 4°C short term. Aliquot and store at -20°C long term. Avoid freeze/thaw cycles.
<b>Buffer</b>	PBS, 50% glycerol, 0.05% Proclin 300, 0.05%BSA
<b>Purification</b>	Protein A

## Immunogen

<b>Gene Name</b>	SMAD5 SMAD5;MADH5;Mothers against decapentaplegic homolog 5;MAD homolog
<b>Alternative Names</b>	5;Mothers against DPP homolog 5;JV5-1;SMAD family member 5;SMAD 5;Smad5;hSmad5
<b>Gene ID</b>	4090.0
<b>SwissProt ID</b>	Q99717.

## Application

<b>Dilution Ratio</b>	IHC 1:200-1:1000;WB 1:2000-1:10000;IF 1:200-1:1000;ELISA 1:5000-1:20000;IP 1:50- 1:200;
<b>Molecular Weight</b>	Calculated MW:55kD;Observed MW:55kD

**Product Name: Smad5 Rabbit Monoclonal Antibody**  
**Catalog #: AMRe21160**

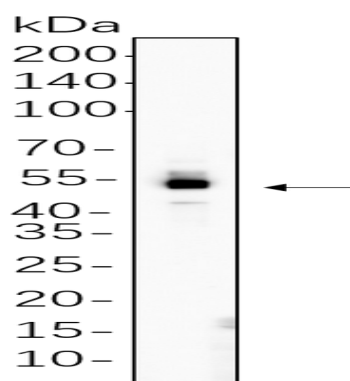


## Background

Cell localization: Cytoplasm, Nucleus. The protein encoded by this gene is involved in the transforming growth factor beta signaling pathway that results in an inhibition of the proliferation of hematopoietic progenitor cells. The encoded protein is activated by bone morphogenetic proteins type 1 receptor kinase, and may be involved in cancer. Alternative splicing results in multiple transcript variants. [provided by RefSeq, Feb 2014],

## Research Area

## Image Data



C2C12 cell lysates were separated by 4-20% SDS-PAGE, and the membrane was blotted with primary antibody 1:1000. The HRP-conjugated Goat anti-Rabbit IgG(H + L) antibody was used to detect the antibody.

## Note

For research use only.