

Product Name: p90RSK Rabbit Monoclonal Antibody
Catalog #: AMRe21156



Summary

Production Name	p90RSK Rabbit Monoclonal Antibody
Description	Rabbit Monoclonal Antibody
Host	Rabbit
Application	WB,IHC,IF,IP,ELISA
Reactivity	Human,Mouse,Rat

Performance

Conjugation	Unconjugated
Modification	Unmodified
Isotype	IgG,Kappa
Clonality	Monoclonal
Form	Liquid
Storage	Store at 4°C short term. Aliquot and store at -20°C long term. Avoid freeze/thaw cycles.
Buffer	PBS, 50% glycerol, 0.05% Proclin 300, 0.05%BSA
Purification	Protein A

Immunogen

Gene Name	RPS6KA1 RPS6KA1;MAPKAPK1A;RSK1;Ribosomal protein S6 kinase alpha-1;S6K-alpha-1;90 kDa
Alternative Names	ribosomal protein S6 kinase 1;p90-RSK 1;p90RSK1;p90S6K;MAP kinase-activated protein kinase 1a;MAPK-activated protein kinase 1a;MAPKAP kinase 1a;MAPKAP
Gene ID	6195
SwissProt ID	Q15418.

Application

Dilution Ratio	IHC 1:1000-1:4000;WB 1:2000-1:10000;IF 1:200-1:1000;ELISA 1:5000-1:20000;IP 1:50-1:200;
Molecular Weight	Calculated MW:83kD;Observed MW:83kD

Product Name: p90RSK Rabbit Monoclonal Antibody
Catalog #: AMRe21156

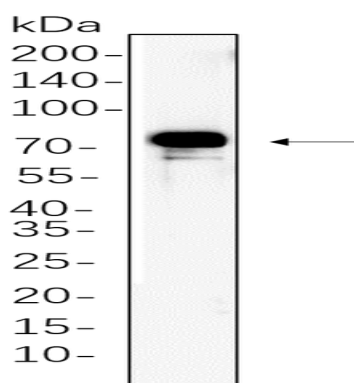


Background

Cell localization: Cytoplasm, Nucleus. Ribosomal protein S6 kinase A1 (RPS6KA1) Homo sapiens This gene encodes a member of the RSK (ribosomal S6 kinase) family of serine/threonine kinases. This kinase contains 2 nonidentical kinase catalytic domains and phosphorylates various substrates, including members of the mitogen-activated kinase (MAPK) signalling pathway. The activity of this protein has been implicated in controlling cell growth and differentiation. Alternate transcriptional splice variants, encoding different isoforms, have been characterized. [provided by RefSeq, Jul 2008],

Research Area

Image Data



Rat womb whole cell lysates were separated by 10% SDS-PAGE, and the membrane was blotted with primary antibody (1:1000). The HRP-conjugated Goat anti-Rabbit IgG(H + L) antibody was used to detect the antibody.

Note

For research use only.